

MAILING ADDRESS:

P.O. Box 1007
Indianapolis, IN 46206-1007

PHYSICAL ADDRESS:

1099 N. Meridian St., Suite 700
Indianapolis, IN 46204

(800) 668-8016

www.christianchurchfoundation.org



Seeds
INTO A
FUTURE
WE WILL NOT
Fully See

ANNUAL REPORT 2025



MISSION

We serve Disciples by gathering, stewarding, and distributing dollars for mission. We do this by identifying and assisting donors who desire to make a difference through planned gifts, and by assisting Disciples ministries to be good stewards of their gifts through sound policies and prudent faith-based investment services.

CORE VALUES

COMMITMENT TO EXCELLENCE

Continually working to improve our services and processes and to be responsive to the needs of donors and of our church.

PARTNERSHIP

Working to support all of the ministries of the church. Serving as an honest broker to connect ministries and donors for the benefit of the Gospel.

INTEGRITY

Honesty, transparency, full disclosure and the ability to fulfill our commitments.

STEWARDSHIP

Serving as trustee for donor and church dollars with the same level of commitment and care that we would have for our own resources. Understanding our purpose for being as a ministry to serve and to benefit all of the ministries of the Christian Church (Disciples of Christ).

FIDUCIARY RESPONSIBILITY

Prudent and diligent oversight of funds under management. Commitment to treat each donor dollar as a sacred gift, requiring the highest level of care.



For God is the one who provides seed for the farmer and then bread to eat. In the same way, he will provide and increase your resources and then produce a great harvest of generosity in you.

2 Corinthians 9:10 New Living Translation



TABLE OF CONTENTS

4	President's Message
6	Consolidated Statements of Financial Position
8	Story: Planting a Seed for Future Scholars
10	Story: Bethany Christian Church, A Century of Planting Seeds and Harvesting Hope
12	Story: "Honey's Money": Assets Inherited but Never Touched
14	Joint Investment Trust
16	Board of Directors
18	Named Permanent Funds
50	Life-Income Gifts
52	Steward's Donor Advised Funds
53	Annual Gifts
54	Fiers-Brown Society
56	Harry T. Ice Distinguished Service Award
58	James P. Johnson Stewardship Award
60	Foundation Staff
62	Acknowledgements and Notices

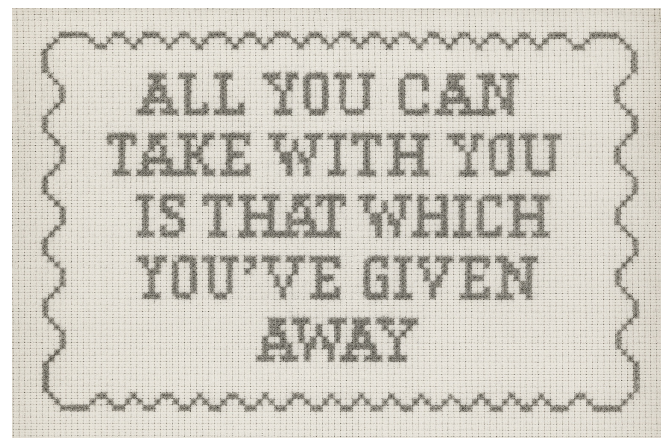
PRESIDENT'S MESSAGE



Around the holidays, I was asked what my favorite Christmas movie is. Several came to mind. Maybe one of the animated classics from my childhood, or something more modern? Maybe a lighthearted musical?

I ultimately chose *It's a Wonderful Life* – the timeless Frank Capra film that aired every Christmas Eve when I was growing up. My family would watch the movie together before going to the candlelight service at church.

The film's enduring message is captured on a needlepoint canvas hanging in George Bailey's office: "All you can take with you is that which you've given away."



Jesus said it a slightly different way:

"UNLESS A KERNEL OF WHEAT FALLS TO THE GROUND AND DIES, IT REMAINS ONLY A SINGLE SEED. BUT IF IT DIES, IT PRODUCES MANY SEEDS" (JOHN 12: 24)

Like gardeners holding seed, we hold so much in the palms of our hands. Possessions. Relationships. Faith. Wisdom. Love. And yes, money.

One-half of stewardship is recognizing how much we have been given. But the other half is just as important: it is learning to hold these things so lightly that they eventually all fall away from our grasp into the earth and into the lives around us.

All you can take with you is that which you've given away.

The Christian Church Foundation supports you in this holy work. We listen to donors' dreams, imagine futures beyond one's lifetime, and carefully steward the plans that will support generations to come.

In 2025, the Foundation helped individuals, congregations, or other ministries establish 42 new permanent funds to support the ministries they care about. Together with other donors who previously created a permanent fund, they gave approximately \$14.1 million to permanent funds, which is \$3.5 million above the five-year average. All of the permanent funds stewarded by the Foundation are listed beginning on page 18.

Our partner investors (congregations, regions, general ministries, institutions of higher education, and others) increased the amount they invested, year-over-year, with the Foundation by more than 45%. These long-term investments benefited from strong market performance, providing more resources for ministry. See page 14 for 2025 investment returns.

Like a gardener tending the soil, the Foundation stewards these dollars on behalf of the church, nurturing growth that ultimately bears fruit for the blessing of many. We are grateful for your support and trust, which help make the Foundation strong.

We are clear that a strong Foundation today produces many new seeds for tomorrow. Seeds of a future we cannot yet see, but one we trust will be beautiful, bountiful, and glorifying to God.

A handwritten signature in black ink, appearing to read "Matt Rosine".

Matt Rosine
President

Christian Church Foundation, Inc.

Consolidated Statements of Financial Position (\$ in 000's)
December 31, 2025 and 2024

Assets

	<u>2025</u>	<u>2024</u>
Cash	\$ 990	\$ 847
Marketable securities and other investments	1,367,160	1,184,730
Contributions receivable	4,311	2,902
Property, equipment, and other assets	<u>485</u>	<u>520</u>
Total assets	<u>\$ 1,372,946</u>	<u>\$ 1,188,999</u>

Liabilities

Non-endowment funds		
Partner investment accounts	\$ 928,788	\$ 807,253
Liability to income beneficiaries under life-income gifts	19,920	18,915
Liability to charitable beneficiaries under life-income gifts	13,404	11,396
Other liabilities	<u>75</u>	<u>77</u>
Total non-endowment funds	<u>962,187</u>	<u>837,641</u>
Endowment funds held for the benefit of others		
Managed for the benefit of the charitable entity donor	36,719	32,561
Restricted purposes for other charitable beneficiaries	<u>15,593</u>	<u>12,597</u>
Total endowment funds held for the benefit of others	<u>52,312</u>	<u>45,158</u>
Total liabilities	<u>1,014,499</u>	<u>882,799</u>

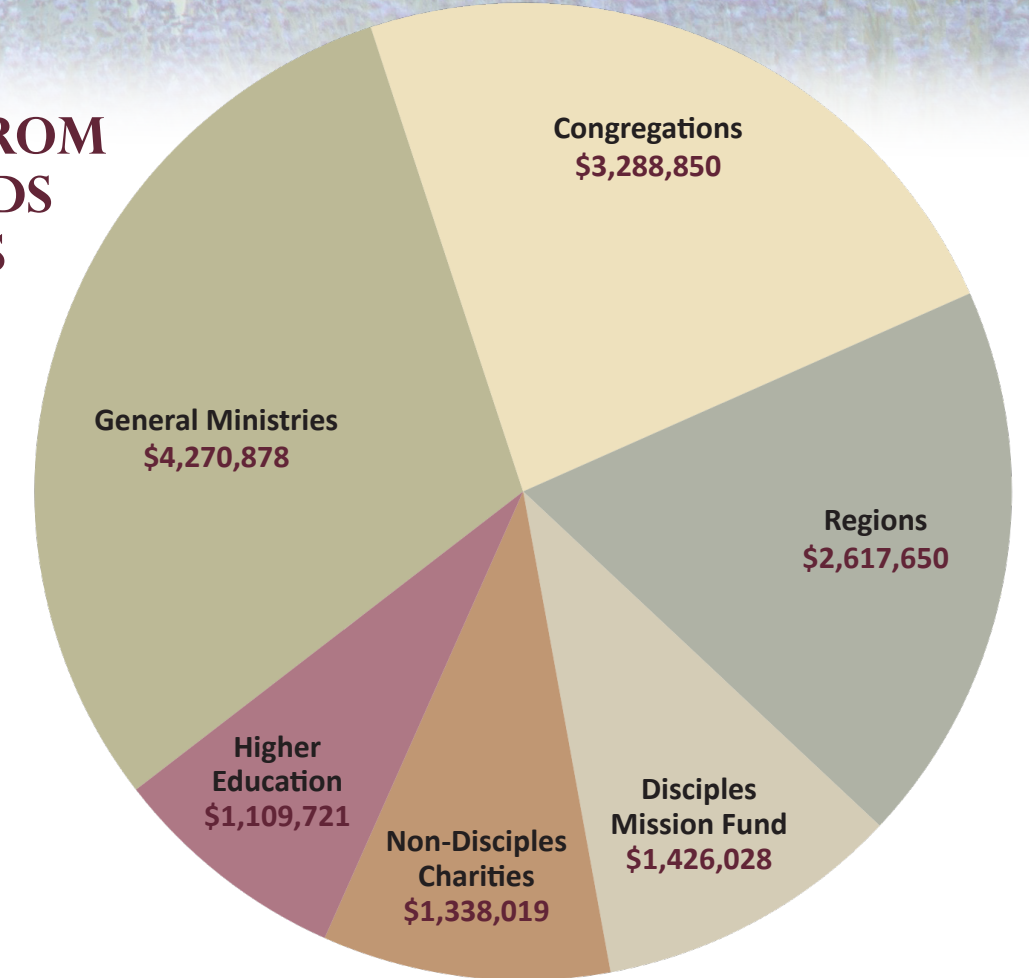
Net Assets

Without donor restrictions	67,403	58,963
With donor restrictions	<u>291,044</u>	<u>247,237</u>
Total net assets	<u>358,447</u>	<u>306,200</u>
Total liabilities and net assets	<u>\$ 1,372,946</u>	<u>\$ 1,188,999</u>

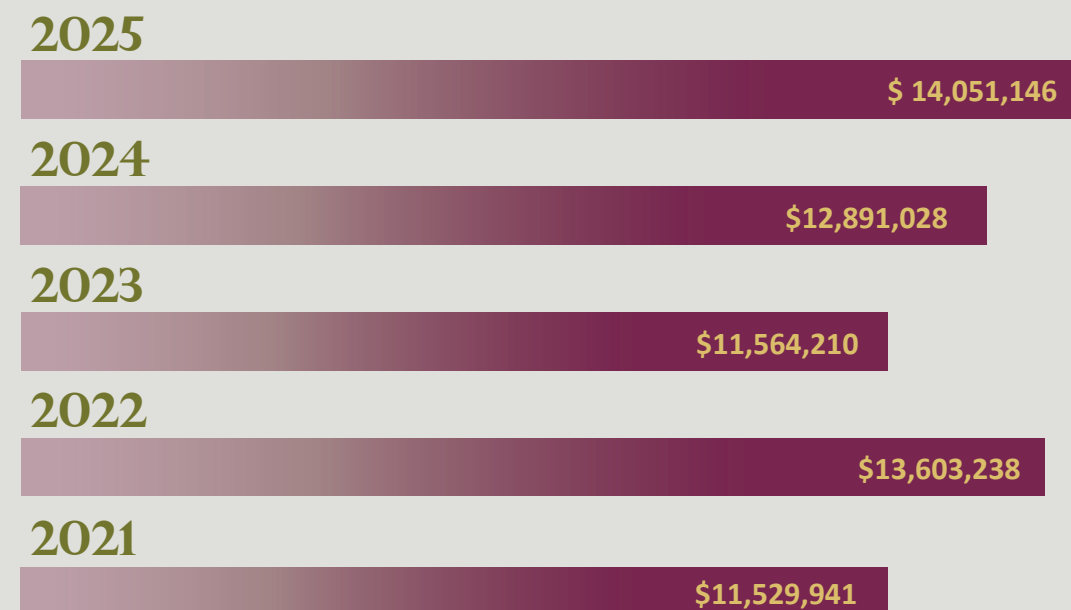
The complete set of 2025 audited financial statements can be found by visiting our website, www.christianchurchfoundation.org, or by calling the Foundation at (800) 668-8016.

CHARITABLE DISTRIBUTIONS FROM PERMANENT FUNDS AND OTHER GIFTS

2025
Charitable
Distributions
\$14,051,146



Five-Year History - Charitable Distributions





Planting a Seed for Future Scholars

REV. DR. ANTHONY L. DUNNAVANT
1954-2001

As the 25th anniversary of the Rev. Dr. Anthony (Tony) L. Dunnavant’s passing approached, his siblings Nellie Durham, Terry Dunnavant, and Kay Slonaker wanted to honor his life “in a way that was more permanent than our individual gifts,” explains Kay.

Growing up a preacher’s kid offered Tony a front seat to the challenges and blessings of congregational pastoring, which combined with his love of history resulted in the rare blend of scholarly insight and pastoral warmth.

As an undergraduate, he studied history and sociology at Fairmont State College and earned a master’s degree in sociology at West Virginia University. His focus turned toward church history, particularly the Stone-Campbell movement and the polity of the Christian Church (Disciples of Christ), as he completed his M.Div. and Ph.D. at Vanderbilt University. While earning his degrees, Tony gained practical pastoral experience while serving congregations in Mannington, West Virginia, Core, West Virginia, and Guthrie, Kentucky.

In 1987, Tony joined the Lexington Theological Seminary (LTS) faculty, teaching church

history with a blend of intellectual rigor and accessible storytelling. Colleagues and students recognized his ability to connect theological tradition to contemporary challenges in ministry. In 1998, he was appointed Dean of LTS, a role in which he served until his untimely death on February 8, 2001. LTS President Richard L. Harrison, Jr., spoke for many when he remembered Tony as “an outstanding teacher and historian of Christianity ... a lover of the church ... profoundly committed to ministry.”

How then could three siblings honor their brother, the respected minister, educator, and scholar?

“Choosing the beneficiaries was the easy part,” said Kay. The family worked with the Foundation to create one permanent fund that would support three institutions that were central to Tony’s love of the church – LTS, Disciples of Christ Historical Society (DCHS), and Cane Ridge.

The support for LTS honors Tony’s vocation as an educator who believed that history is essential to the formation of ministers. His teaching materials—syllabi, examinations, reading lists,



DUNNAVANT SIBLINGS:

- Nellie Durham
- Terry Dunnavant
- Kay Slonaker

lecture outlines—reflect a pedagogy that balanced historical breadth with focused theological inquiry. His teaching challenged students and others to consider how the Restoration Movement shaped congregational and denominational life.

DCHS now houses Tony’s personal papers—correspondence; drafts of academic work; teaching materials, essays, lectures, syllabi, exams; and research notes—materials that illuminate a scholar at work and a teacher forming others for ministry. According to DCHS, “The collection provides an excellent look into Dunnavant’s life and work. It also gives a sense of the time and place in which he was writing and teaching. During his tenure as a historian and professor, the Church faced many questions regarding its role in the world, not unlike today. Dunnavant’s tenure as a historian and teacher was significant because he inspired his students to care deeply about the movement’s history at a time when it was of particular importance.”

Few places better capture Tony’s sense of Christian history as a living inheritance than Cane Ridge, the Kentucky meetinghouse associated with the famed 1801 revival and the Stone Campbell Movement’s early momentum. Tony was deeply involved in the stewardship of this site and was a trustee of the Cane Ridge Preservation Project. In the months before his death, Tony was enthusiastically preparing for “The Great Gathering,” planned for August 2001 to

commemorate the revival’s bicentennial.

When the congregation at Cane Ridge closed in 1921, burials in the congregation’s cemetery, which had received many early leaders of the Stone-Campbell Movement, including Barton Stone, also closed. Poignantly, eighty years later, the cemetery received the historian and Stone-Campbell scholar when Tony became the final person to be buried at Cane Ridge.

“Our hope is that through this fund we will honor Tony by supporting the preservation, study, and teaching of the history that so captured his own imagination. We hope that others might be inspired to add their own contributions to this fund,” said his siblings.

By creating the Anthony L. Dunnavant Memorial Fund, Nellie, Terry, and Kay are nurturing the ministries dear to Tony, inspiring future church leaders and historians to shape and lead the church in a future we will not fully see.

Bethany Christian Church Houston, TX: A Century of Planting Seeds and Harvesting Hope

For more than 110 years, Bethany Christian Church in Houston, Texas, stood as a living testament to what a faithful congregation can sow—and what God can grow from even the smallest seeds of hope. The story began when a handful of devoted disciples gathered at the corner of Brazos and McGowen Streets in Houston’s South End in the spring of 1915. With little more than determination and trust in God’s future, they leased a simple residential lot and raised a wooden structure large enough to hold 300 people in its auditorium. They called themselves South End Christian Church, and on May 2, 1915, they dedicated their new home, launching a legacy that would span more than a century.

As Houston grew, so did the congregation. By 1920, the congregation had outgrown its modest sanctuary. Moving a few miles from its original home, the congregation constructed a three-story concrete building filled with classrooms, gathering spaces, and even a rooftop garden. The congregation’s dreams stretched to envision a grand sanctuary that would one day welcome generations. But those plans were halted when the stock market crashed in 1929. Through the Great Depression, money grew scarce, yet the congregation continued to do what they had always done: worship, pray, give, and trust that God was not finished with them.

By the end of World War II, the concrete building could no longer contain the church’s expanding ministries. In 1945, they sold their

property and moved again, breaking ground on a limestone gothic sanctuary—complete with stained glass windows, classrooms, and a steeple rising above the neighborhood. Embracing a new name in a new place, in 1947 Bethany Christian Church began worshiping in the first air-conditioned sanctuary in Houston, becoming home to those seeking hope, connection, and purpose, as well as a bustling center of community life.

The decades that followed were marked by remarkable growth. By the early 1950s, Sunday School rooms overflowed with more than 500 children and membership surpassed 950. New classrooms, a west sanctuary wing, a covered entrance, and a gym soon were added — investments made possible through bold faith and sacrificial giving.

However, Bethany’s greatest expansion was not architectural. By the 1960s and ‘70s, the church regularly committed half of its annual budget to missions, embodying an outward focused faith rooted in generosity and compassion. They helped plant new congregations, including Memorial Drive Christian Church, and raised young people to see that faith was something to be shared, lived, and offered freely to others.

The 1980s and ‘90s brought a new flowering of ministry. In 1980, Bethany helped found the Christian Community Service Center (CCSC), a now-vital coalition of congregations serving the poor, hungry, disabled, and displaced across Houston.

A few years later, the congregation helped plant Amazing Place, which remains a transformative ministry for families facing the challenges of dementia and Alzheimer’s. Not just partnerships—they were seeds of hope sown by Bethany’s desire to answer God’s call with a consistent, faithful “yes.”

In the 2000s, even as membership declined, the congregation stewarded its resources wisely, retiring all debts and continuing to deepen its engagement with mission partners. In 2001, Bethany began hosting the Christian Church Foundation’s Houston-based staff member, Marilyn Fiddmont, whose presence strengthened donor relationships and fostered long-term charitable commitments. In 2006, the Bellaire Christian Church (Houston, TX) congregation closed its visible ministry and joined with Bethany, bringing more than 70 members and a renewed passion for global and local outreach, including the Micah Project in Honduras and Hospitality Apartments for families undergoing medical treatment in Houston.

When Hurricane Harvey devastated Houston in 2017, Bethany’s legacy of generosity came full circle. Week of Compassion—long supported by the congregation—stepped in to help Bethany’s own members recover, embodying the reciprocal love Bethany had poured out for decades.

By 2020, the congregation faced sobering realities: an aging membership and an aging building needing millions of dollars in repairs. After a long season of discernment, prayer, and conversation, the Bethany congregation felt called once again to plant seeds for a future they might never see. When the opportunity arose to sell the property in 2022, they responded with the same faithful courage that defined them since 1915. The sale generated \$23 million—resources they chose to invest in the ministries and missions they loved.

In June 2025, Bethany announced \$14.375 million in transformational gifts to eight mission partners, including CCSC, Amazing Place, Southwest Good Samaritan Ministries, Brite Divinity School, Hospitality Apartments, Week of Compassion, and international partners like the Micah Project. Additionally, they provided grants of more than \$150,000 to 23 smaller nonprofits nominated by members.



Steven McCampbell, Board Member at Bethany Christian Church, presented the final gift to Marilyn Fiddmont at the final service in November 2025.

During its final worship service on November 16, 2025, the congregation made one final gift, entrusting the Christian Church Foundation with the congregation’s remaining assets – the largest congregational gift received by the Foundation. The gift establishes the Bethany Christian Church, Houston, TX Legacy Fund, a permanent fund, ensuring that the spirit of this congregation—its compassion, courage, and generosity—continues for generations to come.

The closing of the congregation did not mark the end of this church. Instead, it marked the beginning of a new season of generosity—one that will outlive every original beam and stained-glass window. Bethany’s century-long ministry proves that a church is never defined by its address. It is defined by the seeds it plants, the people it serves, and the legacy it leaves in God’s world.

And in that sense, Bethany Christian Church continues to grow. Forever.

“Honey’s Money” Assets Inherited but Never Touched

Born of the gritty determination found in the Texas Panhandle, where in the early 1900s sandstorms, sweeping prairie fires, and rolling, treeless plains were the backdrop to the thriving cattle industry and railroad expansion, grew a legacy that has flowered and will continue to bloom.

Warren K. Ludden was born in Missouri in 1889. One of eight sons, his life was without advantages as Warren’s father died when he was young. Through life’s early challenges, Warren admired and mirrored his mother’s strength and the principles and ethics she embodied.

Era Orby James was born in East Texas in 1901. According to a January 1920 Census document, Era and her mother had moved from East Texas to Hemphill County, in the Texas Panhandle along the Oklahoma border. The Census record describes her mother as “head of the family” and “keeper” of a “rooming house.” Era, now age 18, was working as a Post Office clerk.

	Maurine	Daughter	7	7	7	8
	Bethel Anita	Sister-in-law	7	7	15	8
2-14-23	James, Sally	Head	7	7	48	7
	Era	Daughter	7	7	18	8

Warren made his way to the Texas Panhandle while working for the Santa Fe Railroad company. His first job was shoveling coal ash dumped by the engines into an ash pit. Still displayed in a frame, his first paycheck totaled \$0.18 in 1920.



Warren K. Ludden
“Honey”



Era Orby James
“Muna”

Also during 1920, Warren and Era met. Warren described the magic moment when Era walked into her mother’s boarding house, where he was staying. Warren declared, “I’m going to marry that girl,” and later that year, he did.

Warren and Era were affectionately known as “Honey” and “Muna.” Throughout their life together, Honey and Muna shared much love for each other and their two daughters, Laurene “Tiny” VanHooser and Joanne “Jody” Greathouse Crane. They were generous even when they had little to give early in their marriage.

Honey (Warren) climbed the ladder at Santa Fe with increased responsibility, and working on the railroad gave him a front seat to key innovations that expanded railway operations and safety.



Warren and Era’s granddaughter, Sharon, and her husband, Mike McDonald.

“In all my years of ministry, I have never encountered a more genuine couple. Their love for God and church and people is evident in every aspect of their lives from giving financially to giving in time and service and of themselves. We at First Christian Church Abilene Texas are blessed to have them in our faith community.”

Rev. Greg Morris
Senior Minister

Honey, then road foreman, was aboard Santa Fe’s “Spud Special” (a lengthy freight, which at one time included ninety-one cars, carrying potatoes from Bakersfield, CA, to Chicago) when the railway was testing an advanced radio system that would allow operators in the train’s engine and caboose to communicate even as lengthy trains passed through tunnels or snaked around mountains. The success of the ultra-high frequency radio increased efficiency and safety as operators could quickly communicate complex messages that were not possible using signal flags. This advancement directly tied to Honey’s work that included instructing engineers on the proper handling of locomotives and overseeing safe and efficient railroad operations. Honey engendered respect from all those he worked with, standing out as exceptional among his peers. Similarly, he expected the same effort and integrity from those he worked alongside.

Honey and Muna lived frugally, working hard, and never wasting anything. When they died, not only did they pass along to their family and friends a legacy of love and life lessons, but also the hard-earned assets of their estate. Knowing the life-long care with which Honey and Muna stewarded their resources, spending the financial inheritance was difficult.

Honey and Muna’s youngest daughter passed along much of her inheritance to her daughter, Sharon Greathouse McDonald. Sharon, who had a very close relationship with her grandparents, especially with her grandfather, also struggled with what to do with “Honey’s Money.” The gift from her grandparents remained untouched for many years.

Sharon and her husband Mike wanted to support their congregation at First Christian Church, Abilene, Texas. They reached out to their pastor, Rev. Greg Morris, who connected them to the Christian Church Foundation for guidance. Bobby Hawley, vice president, south central zone, worked with Sharon and Mike to design a meaningful approach that honored Honey and Muna’s legacy.

Inheriting more than “Honey’s Money,” Sharon and Mike drew upon the faith and values by which Honey and Muna lived when deciding to create a permanent fund; a living testament to the hard work, love, and generosity that exemplified their lives. The Warren K. “Honey” and Era Orby “Muna” Ludden Fund now holds “Honey’s Money,” ensuring the seeds that Sharon’s grandparents planted so long ago would impact many generations to come.



JOINT INVESTMENT TRUST

The Christian Church Foundation’s Joint Investment Trust (JIT) offers partner ministries long-term investment options in highly diversified investment portfolios with access to institutional managers and asset classes usually unavailable to ministries as a stand-alone investor. By jointly investing financial assets, participants in the JIT enjoy efficiencies of scale beyond the capacity of any individual investor.

The Foundation is focused on the dual priorities of providing funds for ministry while growing the invested funds to help mitigate inflation. Foundation staff work alongside our investment consultant, investment committee, and board of directors to evaluate long-term performance; formulate asset allocations; and assess each underlying investment.

In addition to assets entrusted to the Foundation by donors, the JIT includes assets from nearly 790 ministry partners. Ministry partners use the Income from their JIT investments to enhance outreach, maintain and repair facilities, support salaries, strengthen health and wellness programs, seed new initiatives, and much more. Through the JIT, the Foundation manages nearly \$943 million in financial assets owned by our ministry partners, including congregations, regions, general ministries, institutions of higher education, and others.

As a faith-based investor, the Foundation engages companies, through our partnership with the Interfaith Center on Corporate Responsibility, adding Disciples voices to those of other shareholder advocates who view the management of their investments as a catalyst for social change.

Partner Investors

HIGHER EDUCATION 8

REGIONS, AREAS, AND AFFILIATED MINISTRIES 64

GENERAL AND RECOGNIZED MINISTRIES 40

CONGREGATIONS 669

The Common Balanced Fund seeks total return from a moderate asset allocation with an emphasis on capital appreciation and income. Through a multi-manager approach, the Fund invests in a broad range of equity and bond subset classes including domestic and international equity, fixed income, and real assets. The target asset mix is 53.5% in equities, 31.5% in fixed income, and 15% in real assets.

The Beasley Growth Fund seeks total return from a moderately aggressive asset allocation with an emphasis on capital appreciation. Through a multi-manager approach, the Fund invests in both domestic and international equities and fixed income. The targeted asset mix is 76% in equities and 24% in fixed income.

The Campbell Multi-Strategy Fund seeks total return from a moderately aggressive asset allocation with hedging strategies. Through a multi-manager approach, the Fund invests in a broad range of

asset classes, including domestic and international equities, flexible capital, real assets, and fixed income. The target asset mix is 65% in equities, 20% in flexible capital, 10% in real assets, and 5% in fixed income.

The Bostick Select Fund seeks total return from a moderately aggressive asset allocation with select social screens. Through a multi-manager approach, the Fund invests in both domestic and international equities, fixed income, and real assets. The targeted asset mix is 70% in equities, 21.25% in fixed income, and 8.75% in real assets.

The Brown Income Fund seeks total return from a conservative asset allocation with an emphasis on income. Through a multi-manager approach, the Fund invests in fixed income, domestic equities, and real assets. The target asset mix is 65% in fixed income, 25% in equities, and 10% in real assets.

Fund Performance as of December 31, 2025 (net of all costs)

Fund	1 Year	3 Year	5 Year	10 Year	Since Inception
Common Balanced	14.595%	12.992%	7.064%	7.980%	7.5% (Dec. 1985)
Beasley Growth	15.278%	14.724%	7.189%	8.311%	8.6% (Dec. 1985)
Campbell Multi-Strategy	17.291%	14.048%	7.819%	8.014%	5.3% (Feb. 2008)
Bostick Select	16.970%	16.056%	8.075%	N/A	10.6% (Jan. 2019)
Brown Income	10.840%	9.145%	3.796%	5.660%	5.6% (Dec. 1989)

Past performance is not indicative of future results. All returns are net of maximum costs.

CHRISTIAN CHURCH FOUNDATION

2025 BOARD OF DIRECTORS



Dana Barnes Lee
Retired
Social Services
Roanoke, VA



Andrew Riestler
Principal
BSB Strategy
Falls Church, VA



Shawn Sandoval
Financial Advisor
Mariner Wealth Advisors
Irvine, CA



JJ Santos
Physician
Union, KY



Marvin Anderson
Senior Vice President,
Private Client Advisor
Bank of America
Private Bank
St. Louis, MO



Marty Askins
Businessman
Stephens County
Abstract Co.
Duncan, OK



Dwayne Bell
Owner-President
Excel Real Estate
Nashville, TN



Diana Brown
Retired Businesswoman
Chickasha, OK



Heather Simpson
Senior Minister
Central Christian Church
Uniontown, PA



Raiza Spratt
Businesswoman
Beaverton, OR



Christal Williams
Regional Minister
Brownsburg, IN



Tom Wood
Retired Executive
Chesterfield, MO

Board Members with Terms Beginning in 2026



Reggie Chapman
Senior Minister
Lakewood Christian Church
Lakewood, CO



Jared Cline
Director of Investments
Nolet Wealth Management
Fort Worth, TX



Erin Dickey
Associate Pastor, Youth and
Community Engagement
Kingwood Christian Church
Kingwood, TX



Kara Foster
Senior Minister
First Christian Church
Madisonville, KY



David Yonker
Senior Minister
First Christian Church
Burlington, IA
Chairperson



Dale Braxton
Senior Pastor
Snow Hill Christian Church
Fort Deposit, AL



Joni Hires
Executive Director
FMH Foundation
Midland, TX



Betty Ridout
Commercial Relationship Manager
Bankers Trust
Des Moines, IA



Bruce Frogge
Senior Minister
Cypress Creek
Christian Church
Spring, TX



Diana Hodges-Batzka
Executive Pastor
Florence Christian Church
Florence, KY



Patrice Holland
Principal, Woods Rogers
Vandeventer Black
Roanoke, VA



Debbie Jennison
Retired Businesswoman
Spokane, WA

EX-OFFICIO MEMBERS



Matt Rosine
President
Christian Church
Foundation



Terri Hord Owens
General Minister
and President
Christian Church
(Disciples of Christ)



Theodore Prentis Beasley
Endowing Founder
1900-1984

More than 2,000 individuals, congregations, and ministries that love and are dedicated to the mission and ministry of the Christian Church (Disciples of Christ) have made gifts to establish a permanent fund with the Christian Church Foundation.

Each permanent fund represents seeds that have been planted with care by those who may not fully see the fruits of their generosity. In 2025, 42 new permanent funds were established.

A permanent fund, sometimes called an endowment fund, is a gifting vehicle designed to create income for each donor's designated ministries while preserving and growing the original gift and any additional gifts. Establishing a permanent fund is simple and allows each donor to select the ministry or ministries they hold dear to benefit from their generosity in perpetuity.

Theodore Prentis Beasley Office of the President (Theodore and Beulah Porter Beasley Fund)

Mary Miller Aagaard Fund
Keri Liverance Abraham Memorial Fund
Ed and Gail Ackall Permanent Fund
 Matthew and Cayla Rosine
N. Dwain and Virginia K. Acker Endowment Fund
Leona Ackers Memorial Fund
David E. and Elaine G. Adams Permanent Fund
Adams-Charlesworth Fund
 Jack A. Adams and Jeff B. Charlesworth
Harold and Ladyne Addison Fund
Airport Christian Church, Blountville, TN Legacy Fund
Rev. Doroteo and Leonila Alaniz Permanent Fund
Clifton C. and Donna R. Albright Permanent Fund
Joseph and Phyllis Albright Fund
Katherine and Nate Alexander Permanent Fund
Dr. L.D. and Beulah Mae (Powell) Alexander Fund
All Peoples Center Foundation Fund
All Peoples Christian Church, Los Angeles, CA Fund

NAMED PERMANENT FUNDS

The names you will read on the following pages represent individuals and ministries active in the life of congregations, regions, higher education, and other ministries; as well as those whose work on earth has ended and are now among the great cloud of witnesses. You will also see the names of congregations and ministries whose visible work has concluded but their legacy continues.

Each permanent fund held by the Foundation stands as a testament to the ongoing, living faithfulness of stewardship that supports the vital ministries of the Church. In 2025, these permanent funds distributed more than \$11 million, fulfilling the hopes of each donor to have a lasting impact today as well as into the future they may never fully see.

Lawrence M. and Rosemary E. Alland Fund
Winnie S. Allbright Permanent Fund
Lloyd J. and Cherry Shelton Allen Permanent Fund
Madison Ann Allen Fund
Mike and Sandy Allen Permanent Fund
Paul J. and Barbara A. Allen Fund
Pauline Allen Permanent Fund
Richard F. and Gladys M. Allen Fund
Robert and Charlotte Allen Permanent Fund
Edwin R. and Nellie L. Allender Fund
Allred Family Fund
Peter J. Altomare Fund
Richard I. and Grace C. Aman Fund
Adam D. Anderson "Run the Race" Scholarship Fund
 David C. and Alice J. Anderson
 Gary and Wilma Anderson
 Marilyn S. Fiddmont
 Good Shepherd Christian Church, Spring, TX

Adam D. Anderson "Run the Race" Scholarship Fund Cont.

Ray S. and Janie M. Jones
 Lovie Reynolds

Francis and Edith Anderson Fund
George and Betty Anderton Permanent Fund
Donald D. and Edith S. Aper Fund
Delilah C. Apple Estate Fund
Maggie and Matt Archibald Fund
Arise Christian Church, Orlando, FL Legacy Fund
Arizona Region Endowment Fund
Arizona Youth Ministries Fund
Arlington Christian Church, Jacksonville, FL Legacy Fund
Arlington Heights Christian Church, Indianapolis, IN Memorial Fund
Loren E. and E. June Arnett Fund
 June Arnett
Gilbert R. and Leona E. Arnold Fund
Mercedese C. Arnold Fund
Artesia Christian Church Permanent Fund
N. Marguerite Artz Fund
William and Lucille Ash Fund
Association of Disciple Musicians Endowment Fund
Association of Disciple Musicians Music Clinician Fund
Herbert A. and Elise P. Atkins Fund
Claib and Ruth Atterberry Fund
Dorothy Ault Permanent Fund
Aurora First Christian Church Permanent Fund
Austin Boulevard Christian Church, Oak Park, IL Legacy Fund
Margaret (Lady) Austin Memorial Fund
Spencer P. Austin Century Fund for Week of Compassion
Spencer P. and Kathleen B. Austin Memorial Fund
Spencer P. and Kathleen Havens Austin Memorial Fund
John and Alberta Axx Fund
Bob and Juanita Bacon Permanent Fund
 Warren and Linda Bachman
 Julia Bacon
 Sara Davis Blodgett
 Les and Kim Brack
 Matt and Val Brack
 Michael and Maria Craddick
 Janet Fast

Bob and Juanita Bacon Permanent Fund Cont.

Suzanne Gordon
 Kirby Hughes Gould
 Sylvia Griggs
 Randy and Jane Harder
 Jay and Debbie Hinkel
 Kenneth and Bonnie Hollingsworth
 Karl and Marlys Hougland
 Rex and Cheryl Jerome
 Charles and Annette Lansford
 Karen Lovelock
 Evelina Moore
 Randall and Betty Morgan
 Anita Norton
 Mark and Connie Oswald
 Grant and Laura Paitz
 Shirley Hinkel Pauls
 Lew and Vickie Pearce
 Lois Schlickau
 Rita Schwartz
 Candace Shockey
 Dan Spitz
 Kenneth and Janice Stoecker
 Donna Swanson
 Timothy and Joy Towle
 Mark and Pamela Ungashick
 Susie Uppman
 Joyce Walton
 Richard and Angela Warwick

Charles F. Bahn Fund
Lorraine Bailey Fund
 Lorraine Bailey
Marcell L. Bailey and Judith Van Horn Fund
Faye T. Baker Week of Compassion Fund
Elsie Ball Fund
Donald H. Bancroft Fund
George and Annie Banks and Ralph and Neva McCotter Fund
Marvin and Alice Banks Endowment Fund
Fernando Barbosa Álvarez and Camille Graulau Fund
Cheryl C. Barclay Permanent Fund
Earle and Rosella Barclay Permanent Fund
Herbert and Jennie Beth Barnard Fund
Clyde and Virginia Barnes Permanent Fund

Joe Barone/David Avery Fund for Ministerial Students
 Charles and Martha B. Barr Fund
 William and Donna Barr Fund
 Boyd Barrett Estate Fund
 John A. and Dorothy (Dot) Barrett Memorial Endowment Fund for Tall Oaks Camp and Conference Center
 Joseph M. and Mary E. Barthel Fund
 Judith E. Frost
 Cathy Barton and Dave Para Music Endowment Fund
 Jay A. and Mona L. D. Stevenson
 Hattie Bass Estate Fund
 C. Robert and Opal C. Baughman Fund
 Jim and Anne Beach Fund
 William J. and R. Jean Beard Fund
 William J. and R. Jean Beard DMF Fund
 Ada Prentis Beasley Endowment Fund
 Leon and Mary Ann Beaty Fund
 Leon P. Beaty
 Nada I. Beck Fund
 James H. and George Behler Memorial Fund
 Fred B. and Diane P. Beidler Fund
 Amy Beins Estate Fund
 George Oren Bell Fund
 Bellaire Christian Church, Houston, TX Scholarship Fund for Brite Divinity Students
 Bellevue Christian Church Outreach Fund
 Bellevue Christian Church Fund
 Fred (Fritz) and Judith Bennett Fund
 John Hadley Bennett Permanent Fund
 Todd C. and Sarah J. Bole
 First Christian Church, Lohman, MO
 Lisa and Jay D. Huxman
 John Kuebler
 Lawrence D. and Rachel S. Leip
 Bob and Sally Robuck
 Judy M. Roedel
 Margaret R. Tyler
 John and Sara Yonker
 Marie R. and W. Gansel Bennett Memorial Fund
 Rose Benning Memorial Fund
 Bessie Benson Permanent Fund
 Berean Sunday School Class, First Christian Church, Maryville, MO Fund
 Eric and Virginia Berg Fund
 John H. Bergman Fund
 Anna E. Berneking Memorial Fund
 Jon L. Berquist and Sally G. Willis-Watkins Fund
 E. K. Berry Estate Fund
 John and Fae Bess Family Fund

Leslie O. and Ethelda M. Best Fund
 Best Bequest Fund
 Bethany Christian Church, Detroit, MI, Kingdom Building Legacy Fund
 Bethany Christian Church, Fraser, MI
 Bethany Christian Church, Houston, TX Legacy Fund
 Bethany Christian Church, Houston, TX
 Bethany College - Thaddaeus Allen Fund
 Bethany College - Gary W. Kidwell Fund
 Bethany College - Janet A. Long Fund

Bethany Fellows Funds

Brian Adams Fund
 Broadway Christian Church Rick Frost and Kim Gage Ryan Fund
 Bethany Fellows
 Bob Hill Fund
 National Avenue Christian Church Hubert Lines Fund
 Oliver "Ollie" S. Norsworthy Fund
 Narka Lee Keller Ryan Permanent Fund
 David and Jennie Shirey Fund
 Victoria and Kenny Morris, Jr.
 Jay A. and Mona L. D. Stevenson
 Gary and Geneva Straub Fund
 Granville and Erline Walker Fund
 Deborrah and Johnny Wray Fund

Bethesda Christian Church Endowment Fund
 H. Cecil and Gladys Bever Fund
 Howard Bever Fund
 Oscar James Bickley and Martha H. Bickley Permanent Fund

Black Disciples Endowment Funds

Cheerful Alphin Fund
 William J. Alphin Sr. Fund
 Mark D. Anderson Fund
 Mark D. Anderson
 Pamala Mazyck Brown and Joseph Brown Fund
 Patricia Clark Fund
 Compton and Bunch Fund
 Jackie Bunch
 Dr. Milton A. Curry, Larris V. Curry, Milan A. and Makiah A. Curry Fund
 Norman S. and Marilyn Scruggs Fiddmont Fund
 Kirby Hughes Gould
 John Foulkes Fund
 General Endowment Fund
 Thomas J. Griffin Memorial Scholarship Fund
 Minnie Hart Fund

Black Disciples Endowment Funds Cont.

Idenia W. Hylton Fund
 Samuel Hylton Sr. Fund
 Rev. Dr. Timothy James and Mrs. Joyce James Fund
 Mary Lou Kegler Fund
 Gary W. Kidwell Fund
 Sotello and Dee Long Fund
 Sotello V. and Elsie D. Long
 Ministers Wives/Husbands Fund
 Dr. and Mrs. S. S. Myers Fund
 Snow Hill Christian Church, Fort Deposit, AL Fund
 A. C. Stone Fund

Robert L. and Maurine K. Blackwell Permanent Fund
 Rosemary Blakemore Fund
 Rosemary Blakemore
 John and Ruth Bland Permanent Fund
 Kittie S. Blankenship Fund
 Janet and Channing Blickenstaff Fund
 Janet and Channing Blickenstaff
 Blue Ridge Boulevard Christian Church, Independence, MO Doris E. Soderstadt Legacy Fund
 Blue Ridge Boulevard Christian Church, Independence, MO
 A. N. and Lucille Boatman Memorial Fund
 Darrell Boatwright Fund
 Darrell and Susan Boatwright
 José and India Bobadilla Fund
 Bob Bock Fund
 Robert M. Bock Fund
 Anna K. Bolton Estate Fund
 Mary Lucile Bone Endowment Fund
 Boulevard Christian Church of Miami, FL Fund
 Vesta G. Bowden Estate Fund
 Lucile Bowers Fund
 Diane Bowland Week of Compassion Fund
 Richard and Suzanne Rintamaa
 Frank S. and Iris U. Boyd Fund
 Ethel Boyers Fund
 Vinton D. and Martha June Bradshaw Fund
 C. Allan and Marie Brady Fund
 C. Allan and Marie Brady Saguario Christian Church - Camp Fund
 C. Allan and Marie Brady Saguario Christian Church - Capital Fund
 C. Allan and Marie Brady Saguario Christian Church - Creative Ministries Fund
 C. Allan and Marie Brady Saguario Christian Church - Endowment Church Pledge Fund
 C. Allan and Marie Brady Saguario Christian Church - Youth Ministry Fund

Violet Marion Brady Permanent Fund
 Martha and Clarence Branaman Family Fund
 Charles and Lynn Branch Fund
 James and Diane Breeding Scholarship Fund
 Jane A. Brewer Fund
 Brewerton Christian Church Legacy Fund
 John B. and Bette Jean Bridwell Fund
 Dr. Robert and Ruth Brier Fund
 Henry and Sue Briley Fund
 Robert N. Brite Jr. Fund
 Charles L. and Peggy L. Brittan Permanent Fund
 Broad Street Christian Church Legacy Fund
 Broadmoor Christian Church, Shreveport, LA Legacy Scholarship Fund
 Broadway Christian Church, Princeton, IN Legacy Fund
 Broadway Christian Church, Tucson, AZ Fund
 Robert Clarke and Berlena Brock Permanent Fund
 Berlena Brock
 Kenneth C. and Edith M. Bronson Fund
 Kenneth C. and Edith M. Bronson - Camp and Conference Scholarship Fund
 Betty Jo and Hayward Brown Fund
 Carl R. Brown Family Fund
 DeWitt and Othel Fiers Brown Estate Fund
 DeWitt and Othel Brown Gift Fund
 Edna Brown Memorial Fund
 Eldred E. Brown Permanent Fund
 George J. and Elizabeth E. (Beth) Brown Fund
 Harold Glen and Alberta Brown Fund
 Harsh and Frances Brown Family Permanent Fund
 Dr. Louis and Carolyn Brown Fund
 Peter and Annaliese Mitchell
 Minerva W. and W. Channing Brown Fund
 Raymond and Suzanne DeMoss Brown Fund
 Robert E. and Wilma M. Brown Permanent Fund
 Steven Brown Fund
 Allison S. Brown
 Carolyn Brown
 Michael C. and Suanne Yarbrough
 Wilma D. Brown Fund
 Estate of Wilma D. Brown
 Rev. Dr. John Charles Brownlee Fund
 Dorothy A. Brownlee
 James L. Bruce Permanent Fund
 Leonard James and Ruth M. Brummett Fund
 Rickie Louise Brunner & Joe & Buena Lovelady Brunner Fund
 Don and Kathy Bryant Fund
 Don Bryant

Don and Kathy Bryant Fund II
Don Bryant

C. Clark Buckner Memorial Fund

Joseph Budai Fund

Joel and Barbara Budde Permanent Fund

Neal and Inez Buffalo Fund

Dean Buffington Fund

Clara Bullock Fund

H. Edwin and Trudy Burke Fund

Leslie and Iris Burkhalter Mission Fund

Karen S. Burniston Fund

Mary Louise Burnsworth Fund

Wanda Burt Estate Fund

Maurice and Lillie B. Burton (Nadine) Legacy Fund
Denise Alexander
Nadine Burton
Lori and John Lucas
Matthew and Cayla Rosine

Russell and Edna Burton Fund
Jerry L. Burton

Bushell Scholarship Fund

Robert E. and Lena B. Butler Permanent Fund

Roy W. and Billie V. Byars Fund

Elvin Perry Byers and Jeannette Rankin Byers Fund

John Henry Cain Fund

Caldwell Leader Education Fund

David and Kristina Caldwell Fund

Guy Caldwell Estate Fund

Guy and Frances Caldwell Fund

Jay and Audrey Calhoun Fund

John and Laura Callison Fund
Dale and Judy Ritchie

Camile Christian Church Fund

Camp Matters Fund

Campbell Cemetery Friends of God's Acre Fund
Brent Reynolds

Clarence R. and Daisy E. Campbell and Harold W. Brown Memorial Fund

D. Charles and Caroline J. Campbell Fund

Evelyn Maxine Campbell Fund

George Warren Campbell Memorial Fund
Gail Campbell
Hillside Christian Church, Kansas City, MO

Mabel Campbell Fund

Gladys B. Cannon, Betty Cannon Powers and Carolyn Cannon Litke Fund

Capilla del Sol Christian Church, Tucson, AZ Legacy Fund

Capitol Hill Christian Church, Oklahoma City, OK Permanent Fund

Frances Mae Carawan and Carol Carawan Horne Fund

Frances Mae Carawan Fund

Caress-Mahin Fund

Dora F. Carley Fund

Althene L. Carlson Memorial Fund

Mr. and Mrs. William Carlson Memorial Fund

Fanny S. Carlton Fund

Carnes-Tate Scholarship Fund

Delores Causion Carpenter Ministry Fund

Ray and Martha Carswell Fund

Barbara Tarizzo Carter Permanent Fund

Dr. Burdellis L. Carter Fund

Don and Cheryl Carter Fund
Don and Cheryl Carter

Pat Carter Fund

Carthage Christian Church, Cincinnati, OH Legacy Fund
Carthage Christian Church, Cincinnati, OH

Jeneve C. Cassels Fund

The CBH Fund for DHM

Centenary Christian Church Camp Scholarship Legacy Fund

Centenary Christian Church Mission Legacy Fund

Central Christian Church, Beaufort, SC Legacy Fund

Central Christian Church, Comanche, TX Legacy Fund

Central Christian Church, Dallas, TX DMF Legacy Fund

Central Christian Church, Enid, OK - George & Bessie Brauser Polzer World Outreach Fund

Central Christian Church, Enid, OK - Deborah Anne Traylor Mission Endowment Fund

Central Christian Church, Enid, OK - Choir Endowment Fund

Central Christian Church, Glendale, CA Summer Camp Scholarship Fund

Central Christian Church, Glendale, CA Legacy Fund

Central Christian Church, Grand Rapids, MI Legacy Fund

Central Christian Church of Marion, IN Legacy Fund

Central Christian Church, Prosser, WA Fund

Central Christian Church, Stamford, TX Fund

Chamberlin Family Fund

Delaney Jenna Chambers Memorial Fund
Gregory and Kathryn Chambers
First Christian Church, Paris, TX

Thomas and Jane Champion Fund

S. K. and Lois Chan - Michael Rintamaa Fund

S. K. and Lois Chan - David Shirey Fund

Jo Ann and Steve Chance Fund
Jo Ann Chance

Irvin (Ernie) C. and Edythe Chapman Fund

Virginia Chapman Permanent Fund

Dennis and Connie Chartier Permanent Fund

Eva Emilie Chase Estate Fund

Chase Fund

Chatham Christian Church, Chatham, VA Fund

Charles Howard and Edna S. Chelf Fund

Cherokee Christian Church, Prairie Village, Kansas DHM Fund

Cherokee Christian Church, Prairie Village, Kansas Tall Oaks Fund

Bernard K. Chostner Memorial Fund

Christian Church (DOC) Trust Fund

Christian Church in Alabama and NW Florida, Mildred B. Watson Memorial Fund

Christian Church in Florida Roscoe C. Gentle Fund

Christian Church in Florida Howard R. and Goldie L. Roberts Fund

Christian Church in Florida Fund

Christian Church Foundation Fund
Pauline N. Engle
Virgie C. Lewis Charitable Gift Remainder
Estate of Marjorie G. McHarg
Michael McHarg
Alice Weber Charitable Gift Remainder

Christian Church in Georgia - Ruth Barbee Fund

Christian Church in Georgia - Anne Beach Fund for Ministry in Georgia

Christian Church in Georgia - June M. Doster Fund for Church Evangelism

Christian Church in Georgia - Bill Edge Memorial Trust Fund

Christian Church in Georgia - Billie Hillis Fund for The Christian Messenger

Christian Church in Georgia - Carol D. Lavery Fund for Camp Christian

Christian Church in Georgia - Marshes of Glynn Christian Church Fund

Christian Church in Georgia - Ray Miles Scholarship Fund

Christian Church Health Care Benefit Trust Fund

Christian Church in Kansas Outdoor Ministries Endowment Fund
Mark and Lisa Whitehill

Christian Church in Pennsylvania Campbell Fund

Christian Church of South Idaho Ken Britt Memorial Fund

Christian Church of South Idaho Larry and Janet Crist Fund

Clarence and Rosalind Chrisp Fund

Doris Jane Christen Fund

Retirement Center of the Christian Church in Virginia Fund

Circle of Faith Christian Church Fund

Billie and Martin Clardy Memorial Fund

Claire Clark Estate Fund

David and Clarice Clark Fund

Lois E. Clark Memorial Fund

O.B. Clark Family Memorial Endowment Fund

Janice and Jim Clifford Fund
Jim and Janice Clifford

Cline Ministry Fund

Harold E. and Ruby D. Cline Fund

Jim and Shirley Cline Fund

Cloverdale Christian Church, Montgomery, AL Fund

Coastal Plains Area - CCSW New Church Fund

Bea and Bud Cobb Fund

Elizabeth Dixie Cobb Estate Fund

Jimmy and Sue Cobb Fund

Francis Marion Cogdill Estate Fund

Colburn-Littlejohn Fund
Minta J. Colburn

Clara M. Cole Memorial Fund

Joanna B. Cole Fund

O. Ivan and Lucille M. Cole Fund

Roger S. Cole Memorial Fund

Samuel Wallace and Edith Eileen Coleman Fund
Alice L. Coleman

College Hill Christian Church Cincinnati, OH Legacy Fund

Jack and Patsy Collins Charitable Fund

W. Darwin and Rachel G. Collins Fund

Colonial Place Christian Church, Richmond, VA Legacy Fund

Gene Combs Estate Fund

Community Christian Church, Hardy, AR Legacy Fund

Community Christian Church of Christ, Fairmont Heights, MD Fund

Community of the Great Commission Fund of the Christian Church in Northern California-Nevada Fund

Dr. John R. and Lucile A. Compton Fund

CONASPEH and Haiti Missions Permanent Fund
Allison S. Brown
Michael C. and Suanne Yarbrough

Gaines M. and Edith R. Cook Fund

Lenora and Lawrence Cook Permanent Fund

Ralph A. Cooper Fund

Nancy Copin International Ministry Fund

Gail Ketchem Todd and Hollis Ketchem and Marjorie Ketchem Cornell Fund

Marjorie and Charles Cornell Family Fund

Connie and William Cosby Permanent Fund

Alice M. Cotabish Memorial Fund

Harry N. and Gladys N. Cotabish New Church Fund

Cotner College Funds

Aylsworth Memorial Scholarship Fund
 George W. Dill Scholarship Fund
 Ann Freeman Scholarship Fund
 Donald T. Hogan Scholarship Fund
 Reverend W. Howard and Mary Holverson Scholarship Fund
 Grace Eleta (Lowe) and William W. (Mac) McDermet Scholarship Fund
 Raleigh J. and Olive M. Peterson Scholarship Fund
 Sharon D. Shields Pastoral Scholarship Fund
 Susan Hiller
 Fay H. and Martha C. Stephenson Scholarship Fund
 Keith and Jackie Stephenson Operating Endowment Fund

Country Homes Christian Church Landscape Fund

Dale O. Cox Memorial Fund
 Max Cox Fund
 Aleine M. Craddock Fund
 Fred B. Craddock Preaching Scholarship Fund
 James R. Craddock Fund
 Charles E. Crank Jr. Memorial Fund
 Stella Travis Creamer Memorial Fund
 Creighton Christian Church, Phoenix, AZ Fund
 Cripe Family Sacred Music Scholarship Fund
 John D. and Mary E. Crist Fund
 Flossie Croft Estate Fund
 Lillian, Hubert and Dewitt Crook Fund
 Harold M. Crose Fund
 Cross Family Outreach Fund
 Parker E. and Marion J. Cross
 Dr. and Mrs. Albert D. Cross Permanent Fund
 Mr. and Mrs. Haywood Cross Fund
 Crossroads Christian Church/St. Andrews Christian Church, Carrollton, TX Legacy Fund
 Arlen and Marjorie Crouch Fund
 W. LeRoy and Wanda Culbertson Fund
 Norman and Catherine Cullumber Fund for Reconciliation
 Ed and Linnea Cullumber
 Estate of Catherine M. Cullumber
 James W. and Shari A. Cullumber
 Kirby Hughes Gould
 Karen L. Johnson
 Lori and John Lucas
 Melinda K. Mains
 Jason Maeder
 Michiel and Carol Wagar
 Wyandot Behavioral Health Network

Dorothy M. Cunningham Memorial Fund
 Bill and Audrey Curtiss Fund
 Edythe and Eldon Curtright Fund
 Cushingberry Fund
 Edward L. Cushingberry Jr.
 Mary Katherine Cushman Fund
 Cypress Park Christian Church - Endowment Fund
 Alda Dacy Fund
 Andrew J. and Shirley M. Dail Fund
 Wilma V. and Dorothy E. Dakan Memorial Fund
 William I. Dale Jr. and Dorothy E. Dale Fund
 Robert G. Dana Scholarship Fund
 Walt Daniels Permanent Fund
 Nellie Wagar Darby Memorial Fund
 Laura K. Dargitz Permanent Fund
 Patricia R. Dart Permanent Fund
 Inez Boote Dasher and Joseph Owen Boote Jr. Fund
 Ruth and Charles Davee Fund
 Dorothy Davidson Fund
 Roger and Barbara Davidson Fund
 Roger Davidson
 Dorothy and Lew Davis Fund
 Esther King Davis Fund
 Gail and Eva Davis Arizona Fund
 Jeanette L. Davis Fund
 Joan Carlton Davis Fund
 Joan Davis
 Carol M. Dawson Estate Fund
 Robert and Martha Dawson Fund
 Don and Norma Deal Fund
 Lindsey Grace Dean Permanent Fund
 Michelle Dean Canada Memorial Fund
 Robert L. Deck Permanent Fund
 Wyman P. Deck Fund
 Lee and Delores DeJonge Permanent Fund
 Robert G. and Nancy B. Denison Fund
 William A. Denston Fund
 Howard E. and Mary Lou S. Dentler Fund
 John and Susan Derryberry Fund
 Arthur M. Detamore Fund
 Arthur M. and Berta Jean Detamore Fund
 Bonita Blair DeVinney Permanent Fund
 DHM - Kaye Edwards Fund for Family and Children's Ministry
 Burrus Dickinson Fund
 Della M. Dickson Fund
 Lorene C. Diesel Fund
 Arthur and Joy Digby Fund
 Gertrude A.A. Dimke Fund

Dolora Turpin Dipple Permanent Fund
 Disciples Christian Church, Boardman, OH Legacy Fund
 Disciples Christian Church, Hamilton, OH Legacy Fund
 Disciples Foundation of Dallas Legacy Fund

Disciples of Christ Historical Society Funds

Grace Louise Bauer Fund
 Central Christian Church, Marion, IN Fund
 College Hill Christian Church, Cincinnati, OH Fund
 Wyman Deck Fund
 First Christian Church, Beaver Falls, PA Fund
 First Christian Church, Lakin, KS Fund
 Edwin Gleaves Endowment Fund
 Maxine E. Hall Fund
 Northwest Christian Church, Oklahoma City, OK Fund
 Origin Community, Spokane, WA Fund
 Peachtree Corners Christian Church, Norcross, GA Fund
 Dorothy N. Sallee Endowment Fund
 Burton B. Thurston, Sr. Fund
 John D. and Marilyn L. Trefzger and Family Fund
 Evelyn N. and Harold R. Watkins Fund
 Keith and Billie Watkins Fund
 Williamsburg Christian Church, Brooklyn, NY Fund

Disciples Home, Inc. Legacy Fund

Disciples Home, Inc.

Disciples Men in Florida Permanent Fund
 Disciples Men in Florida Dale and Betty Fiers Permanent Fund

Disciples Peace Fellowship Funds

Nancy E. Brink Fund
 William H. and Mary E. Jacobs
 Karen McClintock
 Carol Q. Cosby Fund
 Cathy Downing Peace International Fund
 Brenda Etheridge Fund
 Mary Faulkner Fund
 Harold and Golda Fey Fund
 Ben and Marianne Fraticelli Fund
 Wil and Edith Hayes Fund
 Mary E. and William H. Jacobs Fund
 Elizabeth Kratz Fund
 Robert and Adelle Lemon Fund
 Peacemaker's Endowment Fund
 Disciples Home Missions
 Jasmine Morse
 Albert M. Pennybacker Fund

Disciples Peace Fellowship Funds Cont.

Joseph and Winnifred Watson Smith Fund
 Jan Riddle Stone Fund
 William H. and Mary E. Jacobs
 Rhodes and Frances Thompson Fund
 Beverly Weatherill Fund

Disciples Women's Endowment Funds

Beth Ackelson Fund
 Margo Allen Fund
 Pauline Askin Fund
 Cindy Barr Fund
 Rev. Lynette Biggers Fund
 Bluebonnet Area (BBA)-LRGVD
 Adonna Bowman Fund
 Susan P. and Don E. Cox
 Bowman, DePilar, Payuyo, Talley Fund
 Janis Brown Enablers Fund
 Belle Brutout Fund
 Dr. Mildred Butler Fund
 Chery Carew Fund
 Evelyn W. Cartmill Fund
 Lucile A. Compton Fund
 Carol Q. Cosby Fund
 Margaret Coulter Fund
 Fran Craddock Fund
 Pat Crawl Fund
 Margaret Rea Curtin Fund
 Frankie Oliver Daley Fund
 Eva Davis Fund
 Disciples Women Staff Fellowship
 Josephine Elkins Fund
 K.C. Estes Fund
 Laura Estes Fund
 Leah Estes Fund
 Shirley Estes Fund
 Brenda Etheridge Fund
 Norman S. and Marilyn Scruggs Fiddmont Fund
 Florida CWF Fund
 Nancy Fowler Fund
 Ellen Frost Fund
 Bonnie Gearlds Fund
 Georgia Women's Fund
 Susan Gonzalez-Dewey Fund
 Phyllis Hallman Fund
 Linda Hernandez Williams Fund
 Linda Houston Fund
 Mary Jacobs & LaVerne Thorpe Fund
 Carmen Lopez Fund

Disciples Women's Endowment Funds Cont.

- Patricia Messenger Fund
- N. CA - NV Wild Women of the West Fund
- NAPAD Fund
- Ohio Women's Endowment Fund
- Orange, CA Fund
 - Disciples Women, First Christian Church, Orange, CA
- PSW Region Fund
- Judy Row Fund
- Hazel Rudduck Fund
- Martha G. Saunders Fund
- Kathe Searcey Fund
- South Idaho Disciples Women's Ministries
- Helen F. Spaulding Fund
- Doris Spencer Fund
- Jimmie Talley Fund
- Marilyn Taylor Fund
- Trailblazers and Mentors Fund
 - Donna Jackson
- Marilyn Trefzger Fund
- Enid Leece Wahl Fund
- Patsy Wander Fund
- Beverly Weatherill Fund
- Betty Wright Memorial Fund
- Karen Yount Fund

- District III Christian Church in Virginia - Youth Ministry Fund
- Betty J. Doss Fund
- Harold and June Doster Fund
 - Estate of Harold C. Doster
- Thelma R. Douglas Fund
- Athena Dovas Permanent Fund
- Dover Place Christian Church, St. Louis, MO Legacy Fund
- Dr. William C. Dowell Fund
- Arthur J. Dowler Memorial Fund
- Downey Avenue Christian Church Fund
- C. Ray and Elizabeth Doyle Permanent Fund
- Phyllis Scott Dozois Fund
- Genevieve D. Dressler Permanent Fund
- John E. and Elaine P. Drew Fund
- James D. and Lois C. Drum Fund
- Howard and Elo Duffin Fund
- Joyce and K. Wayne Dulyea Fund
- Edna Dumas Estate Fund
- Carolyn R. Duncan Fund
 - Estate of Carolyn R. Duncan
- Don and Emma Jean Dunn Fund

Anthony L. Dunnavant Memorial Fund

- Fred Clarke
- Terry A. Dunnavant
- Nellie Dunnavant Durham
- David Thompson
- Samuel and Amanda Wells

G. Arline Dupy Fund

Albert T. and Alice Koontz Durant and High Street Christian Church Fund

The Dyer Education Fund

Charles Albert Earp Fund

East Lynn Christian Church, Anderson, IN Legacy Fund

East Lynn Christian Church, Anderson, IN

Bill and Jean Eaton Scholarship Fund

Robert Eaton Memorial Fund

Edenside Christian Church of Louisville, Kentucky Fund

Harman and Jeanette Edge Fund

Michael and Carma Weinman

Allen S. and Henrietta G. Edwards Memorial Fund

Gina Edwards Memorial Fund

J. Robert Edwards

Kaeser's R.V. Service, Inc., Ashland, VA

Walter K. "Pappy" Ehman Fund

Norman Ellington Fund for Star Supporter

Elliott Family Memorial Fund for Ministry

Keith and Shirley Elliott Fund

Maggie Ellis Memorial Fund

Allen and Georgia Ellsworth Fund

The Herbert J. and Audria J. Elmore, Herbye Elmore Murray, and Nathalla J. Elmore, M.D. Fund

Elpis Christian Church, Rebecca B. Parrish Scholarship Fund

Engel Family Fund

Robert Gene and Faye Golden Enslin Fund

Bessie Rowenna Erbach DMF Fund

Bessie Rowenna Erbach Fund

Frances Caldwell Ervin Fund

Colie and Georgia Ervin Scholarship Fund - Central Christian Church, Orlando, FL Fund

Colie and Georgia Ervin Scholarship Fund - First Christian Church, Sedalia, MO Fund

Euclid Christian Church Legacy Fund

Eutaw Christian Church, Eutaw, AL Fund

Clyde H. and Elberta D. Evans Fund

John Farrow Evans Fund

William J. Evans Fund

Kate S. Everett Estate Fund

Glen E. and Leslie B. Ewing Laity Learning Experience Fund

Hazel and Clare Ewing Fund

Fairfield Christian Church, Jacksonville, FL Fund

Fairview Christian Church, Louisville, KY Permanent Fund

Faith Christian Church, Hollywood, Florida Legacy Fund

Faith Christian Church, Wichita, Kansas Legacy Fund

Faith United Christian Church, Indianapolis, IN Fund

Inez Christine Fanning Memorial Fund for Church Camp Scholarships

Ellen Farmer and Yvonne Slifer Disciples Women Fund

J. D. and Nancy Faulkner Fund

Fauver Family Fund

FCC Troy - CWF Fund

Joann Garrison Featherston Fund

Marjorie Ferrill Fund

Marjorie Ferrill

Paul E. and Ruth Warden Few Fund

Ruth W. and Paul E. Few Fund

Paul E. and Ruth W. Few

Norman S. Fiddmont, Sr. Legacy Fund

Mark D. Anderson

Dale C. and Mercedes Braxton

Mildred Butler

William R. and Victoria L. Cloyd

Deniza Coleman

Marilyn S. Fiddmont

Marla Ham-Chakotae

Robert W. and Diane A. Hawley

Karen L. Johnson

Gary W. and Judy H. Kidwell

Lori and John Lucas

Melinda K. Mains

Mary Pless

Thomas and Kathleen Potter

Darryl M. and Dolores M. Trimiew

Cathie L. and Craig White

Johnny and Deborah Wray

A. Dale Fiers Endowment for the Office of General Minister and President Fund

A. Dale and Betty Fiers Endowment Fund

G. Everett and Mabel M. Figgs Fund

Howard H. Fillmer Scholarship Fund

Finfgeld Family Fund

Fireside Christian Church (Disciples of Christ) Fund

Cheryl K. Breiner

Paul S. and Kathi S. Cosgrove

Debra and Phillip R. Gerkin

Sandra L. Hergenreder

Sherrill Morris

First Christian Church, Alvin, TX Fund

First Christian Church, Arlington, TX Outreach Permanent Fund

First Christian Church, Arlington, TX Foundation, Inc. Permanent Fund

First Christian Church, Bartlesville, OK Legacy Fund

First Christian Church, Bartlesville, OK

First Christian Church, Bay City Legacy Fund

First Christian Church, Bellefontaine, OH Fund

First Christian Church, Bonne Terre, MO Legacy Fund

First Christian Church, Boonville, MO Support Fund

Jay A. and Mona L. D. Stevenson

First Christian Church of Bucyrus, OH Legacy Fund

First Christian Church, Burley, ID Legacy Fund

First Christian Church, Camden, AR Legacy Fund

First Christian Church, Chicago Heights, Illinois (Disciples of Christ) Legacy Fund

First Christian Church, Crowley, LA Legacy Fund

First Christian Church of Cumberland, MD Legacy Fund

First Christian Church, Danville, VA Fund

First Christian Church (DOC), Daytona Beach, FL Fund

First Christian Church, Dixon, IL Outreach Fund

First Christian Church, Douglas, AZ Fund

First Christian Church, Downers Grove, IL Fund

First Christian Church of East Moline, IL Week of Compassion Legacy Fund

First Christian Church, East Moline, IL

First Christian Church of East Moline, IL Legacy Fund

First Christian Church, East Moline, IL

First Christian Church, Fairmount, IN Legacy Fund

First Christian Church, Fayette, MO Offering Legacy Fund

First Christian Church, Fayette, MO

Jay A. and Mona L. D. Stevenson

First Christian Church, Fayette, MO – Sabbatical and Pastor Education Fund Fund

Jay A. and Mona L. D. Stevenson

First Christian Church, Fremont, Nebraska Legacy Fund

First Christian Church, Fremont, Nebraska Scholarship Fund

First Christian Church, Goldsboro, NC Spiritual Life Program Endowment Fund

First Christian Church, Goldsboro, NC Music Endowment Fund

First Christian Church, Goldsboro, NC

First Christian Church, Goldsboro, NC Major Repair and Renovation Endowment Fund

First Christian Church, Goldsboro, NC Chancel Endowment Fund

First Christian Church, Graham, TX Fund

First Christian Church, Grand Junction, CO Endowment Fund

First Christian Church of Greater New Orleans, LA Legacy Fund
 First Christian Church of Greater New Orleans, LA
 First Christian Church, Greencastle, IN Legacy Fund
 First Christian Church, Greensburg, PA - Charles and Anita Owen Fund
 First Christian Church, Hammond, IN Trust Fund
 First Christian Church, Hutchins, TX Fund
 First Christian Church, Jackson, MS Legacy Fund
 First Christian Church, Janesville, WI Legacy Fund
 First Christian Church, Jasper, AL Legacy Fund
 First Christian Church, Jonesboro, AR Disciples Women Fund
 First Christian Church, Lakin, KS Legacy Fund
 First Christian Church, LaPorte, IN Legacy Fund
 First Christian Church, Laredo, TX Legacy Fund
 First Christian Church, Lehigh Acres, FL Fund
 First Christian Church, Mankato, MN Legacy Fund
 First Christian Church, Mansfield, LA Legacy Fund
 First Christian Church, Mason City, IA Legacy Fund
 First Christian Church, Maywood, IL Holt and Thomas Overseas Mission Fund
 First Christian Church, Merced, CA Fund
 First Christian Church, Miami, FL Endowment Fund
 First Christian Church, Mineral Wells, TX Legacy Fund
 First Christian Church of Moline Legacy Fund
 First Christian Church, Morro Bay, CA Legacy Fund
 First Christian Church, Morro Bay, CA
 First Christian Church, Mount Vernon, WA Legacy Fund
 First Christian Church, North Hollywood, CA Christian Care Fund
 First Christian Church, Perryton, TX A.B. Boxwell Memorial Scholarship Fund
 First Christian Church, Prescott, AZ Legacy Fund
 First Christian Church of Ravenswood, WV Legacy Fund
 First Christian Church, San Lorenzo, California Fund
 First Christian Church, San Mateo, CA Permanent Trust Fund
 First Christian Church, Scottsbluff, NE Legacy Fund
 First Christian Church, Scottsbluff, NE
 First Christian Church, Selma, AL Legacy Fund
 First Christian Church, Shelbyville, TN Endowment Fund
 First Christian Church, South Bend, IN Legacy Fund
 First Christian Church (DOC), Tampa, FL Fund
 First Christian Church/The Table, Knoxville, TN Legacy Fund
 First Christian Church, Topeka, KS Disciples Women's Fellowship Fund
 First Christian Church, Tupelo, MS Legacy Fund

First Christian Church, Virden, IL Myra Henderson Willson Fund
 First Christian Church, Whittier, CA Legacy Fund
 First Christian Church, Whittier, CA The Lyles Fund
 First Christian Church, Willoughby, OH Legacy Fund
 First Christian Church, Wilmer, TX Legacy Fund
 First Christian Church, Wilmington, DE for DOM Fund
 First Christian Church, Woodville, TX Legacy Fund
 First Christian Church, Yoakum, TX Fund
 First Christian Church of Youngstown, OH Legacy Fund
 First Christian Church, Youngstown, OH Fund
 First Christian Church Foundation, Olympia, WA Jenny Hughes Endowment Fund
 First Christian Church, Olympia, WA
 Rosemary Fishback Fund
 Clinton and Cora Fisher Scholarship Fund
 Mary E. Fisher Fund
 Fisher and Downing Memorial Endowment Fund
 Katherine Fitzgerald Fund
 Arthur and Marie Fleming Memorial Fund
 Marie K. Fleming Fund
 Keith and June Fleshman Week of Compassion Fund
 Keith and June Fleshman Trust
 Ruth Fletcher and Ronald C. Greene Fund
 Ruth A. Fletcher and Ronald C. Greene
 Debbie and Bill Jennison
 Walker and Marjorie Fletcher Fund
 Jessie M. Flint Fund
 Carl and Georgia Flock Fund
 Grace L. Flood Memorial Fund
 Florence Christian Church Capital Fund
 Florida Disciples All Saints Fund
 Patricia Cornelius
 Maggi Smith Hall
 Glenda Harper
 Craig Hazel
 Sandra Jakeway
 Thomas and Sandra Messick
 Miamisburg Class of 1958
 Palm Lake Christian Church, Saint Petersburg, FL
 Laura Rall
 Regina Roman
 James and Paula Staudt
 James and Caroline Steele
 Ronald Sutton
 Daniel R. and Nel G. Webster
 Rita Wilkes
 Flouhouse Memorial Fund
 Terry Foland Fund
 Mary Bruce and Joe Foley, Jr. Memorial Fund

Thell and Monnie Foley Fund
 Leah G. Foote Estate Fund
 Thomas C. and Sally Fowler Fund
 Elizabeth Ann Frazier Fund
 Freeport Boulevard Christian Church, Sacramento, CA Endowment Fund
 Clarice E. Friedline Fund
 Friends of First Christian Church, Hoopston, IL Fund
 Friendship Christian Church, Athens, Georgia Legacy Fund
 Jack and Judi Frost Permanent Fund
 Judith E. Frost
 Carl Vernon Fryer Estate Fund
 Vernon and Jodi Fuller Fund
 Estate of Joe Ann Fuller
 Fuller Family Fund
 Fullerton First Christian Church Living Plant Fund
 The Fund for Generosity
 Bruce and Laura Barkhauer
 Mont Robertson and Myra Love Gabbert Fund
 Gaffney Family Fund
 Jonathan and Amy Gaffney
 Leslie R. and Margery A. Galbraith Fund
 Jerry and Anna Galbreath Fund
 George W. Gallagher Fund
 Ethel (Ma) Gamble, Franklin and Jeanne Gamble Fund
 Joyce Gardner Memorial Outreach Fund
 Gardner Legacy Fund
 Kristen Beach
 Reverend Charles Lloyd and Lilly Garrison Fund
 Willard A. and Aileen Garrison Fund
 John C. and Valda L. Garver Fund
 Mary Jane Garwood Fund
 Fran Gasche Fund
 Geist Christian Church, Indianapolis, IN Music Program Fund
 General Board Support Fund
 Hazel Charleson Getchell Fund
 Earl and Laurice Gibbs Permanent Fund
 Walter and Grace Giffin Fund
 Delmer and Norma Gooden Gilbert Fund
 Doris Rushton Gilfoy Fund
 Dorothy Johnson Pierce Gillespie Fund
 Donald K. Gillett II and Charisse L. Gillett Fund
 Charisse L. and Donald K. Gillett, II
 Glen Park Christian Church, Gary, IN Memorial Fund
 Peggy Glenn Memorial Permanent Fund
 Ralph E. Glenn Memorial Fund
 Ted and Royce Ann Glidden Fund
 Helen E. Goble Fund

Esteban González-Doble and Annette Piñeiro Fund
 Norris and Sarah Goode, Annabel Goode, and Charles E. and Dorothy Goode Jones Fund
 Grayce B. Goodrich Fund
 Mary Helen Gorden Fund
 Charles Robert and Elizabeth Goss Fund
 Estate of Elizabeth J. Goss
 Marilyn W. Gossett World Outreach Fund
 John R. and Kirby Hughes Gould Family Fund
 Gould-Spradlin Family Fund
 Iris Graham Memorial Fund
 L. W. Graham Fund
 Paul Graham Fund
 Richard H. Graham Laurelview Fund
 Christian Church in Pennsylvania
 Ronald W. and Gwen I. Graham Fund
 Sara and Paul Graham Fund
 Sara Hernandez Hudman Graham Fund
 Chet and Juanita Grant Fund
 Richard C. Gray Fund
 John Lee Frederick Maurice Grayson Memorial Youth Scholarship Fund
 Stephanie E. Grayson
 Greater Kansas City Disciples Women Fund for Tall Oaks
 Monica Myers and Samuel Greenberg Fund
 Monica Myers Greenberg
 Juanita Greene Memorial Fund
 Greenville Avenue Christian Church, Dallas, TX Endowment Fund
 Lucia Gregg Third Christian Church Memorial Fund
 Robert Lee Griffin Jr. Permanent Fund
 Kenneth D. and Gwynne N. Griffith Fund
 William F. Griffith Estate Fund
 Dean and Jacqueline Grinstead Fund
 Margaret Grisham Estate Fund
 Virginia Fay and Alfred Grosse Fund
 Florence W. Grundy Fund
 Gus and Louise Gumerson Fund
 Jerry Hacker Memorial Fund
 Hackley Special Event Series Fund
 Harriette Hadachek Fund
 Gordon W. and Ruth C. Hagberg Permanent Fund
 Florence L. Hagen Estate Fund
 Forrest D. and Eleanor V. Haggard Family Fund
 Evelyn Faye Hale Fund
 Lynne Wiegardt Haley Fund
 Lynne W. Haley
 Hall Family Fund
 Beth C. Hall Estate Fund

Dick and Diane Hall Permanent Fund
 Edgar Hall Fund
 Florence E. Hall Fund
 Gene V. Hall Fund
 Maxine E. Hall Fund
 Robert and Kathryn Hall Fund
 Rose M. Hall Memorial Fund
 Rev. Thomas A. Hall Memorial Fund
 Stan and Shirley Hamamoto Fund
 Hamann Family Fund
 Hamilton Christian Church Legacy Fund
 Harold E. and Mildred J. Hamm Fund
 Richard L. and Melinda A. Hamm Fund
 Hammett and Goodwin Fund
 Hamner Family Fund
 C. Leslie and Elaine P. Hanna Fund
 Martha Ann Hannan Fund
 Pat and Sue Hansen Fund
 Sue and Pat Hansen
 Amy Sue Harbert Memorial Fund
 Harbison - Kelly Fund
 Randal and Linda Hardwick Fund
 Malta N. Hardy Memorial Fund
 Walter A. Hargraves Permanent Fund
 Reverend Benjamin H. and Beulah M. Harman Memorial Fund
 Estate of Martha G. Rountree
 Harper-Colvin-Smith Fund
 Sandra K. Harper
 Amy Harradon Estate Fund
 George A. and Julia E. Harris Fund
 Mabel L. Harris Fund
 Mary Margaret Harrison Estate Fund
 Mike and Brenda Harrison Fund
 Mike and Brenda Harrison
 Page Harshfield First Christian Church of Bartlesville Fund
 H. Leon Harter Fund
 Grace Hoenes Hartley - Christian Temple Fund
 Louis E. and Mary T. Hartley Fund
 Estate of Mary T. Hartley
 Donna and Bert Hartwell Permanent Fund
 Harvel Christian Church Fund
 Ruth E. Harvey Fund
 Harold D. and Betty J. Hassell Fund
 Thelma W. Hastings Fund
 Ray H. Havens Memorial Fund
 Mr. and Mrs. Vance Hawkins, Abbie Tennyson Caley, and Bertie A. Stiles Memorial Fund

Robert W. and Diane A. Hawley Fund
 Robert W. and Diane A. Hawley
 Tom and Gwen Hawley Fund
 Donald E. and Mary Frances Hayden Fund
 Will and Edith Hayes Fund
 Mary Haymaker Fund
 Oscar Haynes and Joan Bell-Haynes Fund
 Evaline M. Hazen Fund
 Ryan Hazen and Ruth Weaver-Hazen Fund
 Ryan Hazen and Ruth Weaver-Hazen
 Heights Christian Church, Houston, TX Legacy Fund
 Lottie Heller Fund
 Frank R. and Patricia C. Helme Permanent Fund
 Glenn H. and Kathleen S. Helme Fund
 Robert J. and Nita Floe Hempfling Fund
 T. E. Henderson Perpetual Fund
 M. Rick Hendricks Permanent Fund
 Donald L and Mary L. Henry Permanent Fund
 Ena (Chatfield) Henry Fund
 Thomas L. Henry Memorial Fund
 Willard and Florence Henry Memorial Fund
 Thomas C. and Faith G. Herren Fund
 Laura Beth and Robert Hevelka Fund
 Duane F. Heward Fund
 Kennith and Ruth Louise Hewitt Permanent Fund
 Ray S. and Margaret W. Hewitt Fund
 Herbert A. Hibben Fund
 Clara Hicks Memorial Fund
 Highfield Fund
 Highland Christian Church, Hobbs, NM Legacy Fund
 Paulette "Bisi" Louise Short Hightower Fund
 Hill Street Christian Church, Louisville, KY Legacy Fund
 Hill Street Christian Church, Louisville, KY
 Burnie and Naomi Hill Fund
 Emma Wright Hill Permanent Fund
 Homer B. and Lois E. Hill Permanent Fund
 Mattie E. Hill Memorial Fund
 Marjorie A. Hill Fund
 Thomas Morgan Hill and Clara Mae Hill Fund
 Hillcrest Christian Church Outreach Fund
 Hillside Christian Church Educational Endowment Fund
 Barbara Kay Hittle Fund
 Daisy and Albert Hofbauer Fund
 Clara W. Hofrichter Memorial Fund
 Lena Dickinson Holley Family Endowment Fund
 Hollywood-Beverly Christian Church, Los Angeles, CA Fund
 Charles and Christine Holmes - Raymore Christian Church Fund

Christine and Charles Holmes Fund
 Deloris B. Holt Memorial Fund
 Olen and Marie Holt Fund
 Orval and Margaret Holt Fund
 Robert W. and Diane A. Hawley
 Orval M. and Margaret J. Holt Permanent Endowment Fund
 Estate of Margaret J. Holt
 Rev. Pamela G. and Randy Holt Fund
 Pamela G. and Randy Holt
 Hood River Valley Christian Church Facility Fund
 Nelle Elizabeth Hooks Fund
 Bayo and Virginia Hopper Fund
 Tom and C. Jayne Hopson Fund
 Evelyn Horigan Fund
 Harold H. and Virginia R. Horn Fund
 Joseph Hope Hornback and Helene Hornback Wert Memorial Fund
 Joseph Thomas Hornback, M.D., Geordia Munn Hornback, and Helene Hornback Wert Memorial Fund
 Edward M. and Laura C. Hoshaw Fund
 Hosimba Fund
 Dr. Alvin E. and M. Katherine Houser Fund
 Betty G. Houston Memorial Fund
 Dale Leslie Houston Fund
 Fred and Alpha Houston Fund
 Sam B. and Mary A. Howard Endowment Fund
 Norman H. and Mary J. Howett Memorial Fund
 Bob and Reba Hubbard Fund
 Uverna A. Hubbell Estate Fund
 Daisy McLin Huber Estate Fund
 Barbara Huckins Fund
 William J. and Mary Ella Hudspeth Memorial Fund
 Roland K. and Kathryn F. Huff Fund
 Alice Hughes Estate Fund
 Ken and Roberta Hughes Fund
 Sylvia Hughes Memorial Fund
 Linda D. and Richard J. Hull II Fund
 Mary V. and James M. Hull Fund
 Thomas Lewis Hull Memorial Fund
 Ruth V. Human Fund
 John O. Humbert Fund
 Humeston Christian Church, Humeston, IA God's Acres Fund
 Humeston Christian Church, Humeston, IA
 Arthur K. Hunt Fund
 Norman C. and Judith Lewis Hunt Fund
 Jeff and Lisa J. Buday
 Jenny M. and Kevin Todd Hathorne

Mike and Enid Hunter Fund
 Martha and John Bates
 Ginny Bowman
 Ron Byrd
 Troy Campbell
 Philip and Elizabeth Chacko
 Thomas H. and Anne C. DeWitt
 Brenda Elliott
 First Christian Church, Canyon, TX
 "The Rabbit Hole" Adult Sunday School Class, First Christian Church, Houston, TX
 Cindy Gatz
 Charlotte Hambrick
 Mike and Brenda Harrison
 Robert W. and Diane A. Hawley
 Margy House
 Huntsville Church of Christ, Huntsville, TX
 Robert L. and Carolyn J. Jones
 Jim Kitchens
 A. Oden and Fonda Latham
 Jamie Longacre
 Billy F. and Eveline McCuan
 Nancy Moore
 Kenneth and Mary Needham
 Danny O'Grady and Anne Shaunessy
 John and Connie Porter
 Patricia C. and Daniel B. Walsh
 Danny and Susan Wiseley
 Jane M. Wolf
 Kathy Yeager
 Anna Huston Fund
 T. R. Huston Fund
 Harry T. Ice Memorial Fund
 Clarke and June Imbler Fund
 John M. and Toni W. Imbler
 William J. and Anita D. Imhoff Fund
 Anita D. Imhoff
 Eugene G. Ingham and Patricia J. Ingham Fund
 Estate of Patricia J. Ingham
 Ingleside Christian Church of Arizona Fund
 Irving Park Christian Church, Chicago, IL Fund
 Ivan M. and Ruth L. Jacobs Fund
 Lindsey N. Jacobs Fund
 Tom and Nancy Jacobus Fund
 Tom and Nancy Jacobus
 Jarvis Christian University Disciples Endowment Fund
 Jefferson Street Christian Church, Spokane, WA Fund
 Elizabeth Schmidt Jenkins Fund
 Janet Tadlock Jennings Fund in Memory of Wallace Clark Tadlock and Annie B. Sharp Tadlock

Bill and Debbie Jennison Fund
 Jerusalem Christian Church, Lafayette, LA
 Endowment Fund

Charles W. (Bill) and Opal Jiles Permanent Fund

Bettye J. Jimerson Memorial Fund

Leonard and Mary Jimerson Memorial Fund

Johnson Galesburg Sabbatical Fund

April Johnson Fund for the Ministry of Reconciliation
 Velma Alexander
 Monica Banks
 Timothy Butler
 Mary Jane Button-Harrison
 Jackie Compton Bunch
 Sam and Mary Elliott
 First Christian Church, Yukon, OK
 John Goebel
 Allen V. Harris
 George Hutchison
 Sandhya Jha
 Lynn and Jim Lackey
 Frank and Millie Martin
 Laurence and Margaret Merkle
 Cisa and Patricia Payuyo
 Lauren Roe
 Jeri Sias
 April and Garry Sparks
 Melissa St. Clair

Frances Z. Johnson Fund

Gene and Sue Johnson Congo Medicine Fund

Harold A. Johnson Sr. Fund

Herman R. and Nina Locke Johnson Fund

James P. and Nancy J. Johnson Endowment Fund for Ministry
 James P. Johnson

John M. and Mary Perry Johnson Fund

Leighton and Phyllis Johnson Permanent Fund

Lloyd E. and Janet E. Johnson Fund
 Karen L. Johnson

Mary Elizabeth Johnson Fund

Nancy Jane Holle Johnson Fund for Ministry to Children

Ralph L. and L. Pearl Johnson Memorial Fund

Randy and Sandy Johnson Fund

George D. Johnston Youth Ministry Fund

The G. Curtis and Sybil Nettleton Jones Fund

George W. and Frances L. Jones Fund

Joyce Jones Fund

Lola and Walter Jones Memorial Fund

Loy Paxton Jones and Janie L. Jones Fund
 Paxton Jones and Janie L. Jones

Louise M. Jones Fund
 Louise M. Jones

Ruth N. Jones Fund

Tom and Alberta Jones Fund

Belva Brown Jordan Fund
 Ben Bohren
 Rosario Ibarra
 Belva Brown Jordan
 Tamara N. and John Rodenberg

Kamp Kaleo Legacy Funds

Don and Jan Dean Fund
 Donald F. and Janice M. Dean

Bryce and Ashley Iliff Fund
 Bryce and Ashley Iliff

Pastor Judie and Dean Luther Fund
 James and D'Arcy Blosser
 Jeff and Diane Breitreutz
 Paul E. and Ruth W. Few

The Miller Family Legacy Fund
 David Shipley

Karl and Jeanette Karrenbrock Fund

Ted and Pauline Katsanis Fund

Irvin B. and Laverne Guthrie Bomar Keagy Fund

Curtis L. and Barbara J. Keith Permanent Fund

Chloe Kelly Fund

J.M. Kelly Family Fund
 Edith Kelly-Thompson

George and Linda Kemp Permanent Fund
 George A. and Linda M. Kemp

Paul D. and Alletta B. Kennedy Memorial Fund

Phil and Nora Kennel Fund

Kenwood Christian Church (DOC), Cincinnati, OH Fund

Paul E. and Betty Jane Kerr Fund

Ruth M. and Harold J. Kessler Fund

Rev. A. Boyd and Esther Bayne Keys Fund

Gary W. and Judy H. Kidwell Fund

Louis E. Kidwell, Jr. Fund

Dave and Donna Killen Fund

R. A. and Louise Kilpatrick Fund

Eula V. Kilpatrick Fund

James and Dolores Kimsey Mission Fund

Robert and Doris King Permanent Fund

Leslie L. and Elizabeth M. Kingsbury Fund

Rex and Joyce Kingsland Fund

Robert and Sallie Kintner Fund

Floyd A. Kirchner Memorial Fund

Robert E. and Bonnie R. Kirkman Fund

Kamp Kaleo Legacy Funds

Don and Jan Dean Fund
 Donald F. and Janice M. Dean

Bryce and Ashley Iliff Fund
 Bryce and Ashley Iliff

Pastor Judie and Dean Luther Fund
 James and D'Arcy Blosser
 Jeff and Diane Breitreutz
 Paul E. and Ruth W. Few

The Miller Family Legacy Fund
 David Shipley

Roscoe and Irene Kirkman Memorial Fund

W. L. and Virginia M. Kiser Fund

Gilbert and Ruth Kistler Permanent Fund

Shirley D. Kling Estate Fund

The Klosterman Fund

Ruth Kohr Fund

Rev. Victor S. Koontz Memorial Fund

Russell H. and Florence M. Koppin Memorial Fund

Paul and Peggy Korslund Memorial Fund

David and Karen Kovalow-St. John Fund

Carolyn Kroll Fund
 Carolyn Kroll

Jennie Mae Trigg Kuster Permanent Fund

Lyle and Marian La Favor Permanent Fund

Chesefy A. LaBounty Memorial Fund

Lackland Trust Fund

Imogene Lahman Fund

Lakeside Christian Church, Glen Allen, VA Permanent Fund

Lakeview Christian Church, Dallas, TX Legacy Fund

The Lakewood Ohio Christian Church Legacy Fund

George E. Lambert Fund

Clive and Dixie Lampo Family Fund

Landover Christian Church Fund

Jerry and Ginger Lang Fund

Don and Alice Jane Lanier Fund
 Donald L. and Alice Jane Lanier

Otha and Maybelle Lanier Outreach Fund

Lark Ellen Christian Church Endowment Fund

Lashen-Grimes Family Fund

Maloye R. Latham Fund

Oden and Fonda Latham Health in Ministry Fund
 A. Oden and Fonda Latham

Richard L. and Doris M. Lauer Fund

Edward B. Laughlin Fund

Mary Walton Lawson Scholarship Fund

Donald A. and Joyce M. Leak Fund

Marvyn R. F. and Maxine P. Lear Fund

Leathers Family Memorial Fund

John Charles Leber Memorial Fund

Bill and Janelle Ledgerwood Fund

John and Ann Ledwith Family Fund

Elmer T. Lee Permanent Fund

Mary Lee Fund

Calvin S. Leeds Fund

Emily L. Leedy Fund

Desa L. Lee-Laird Fund

Janice Legg Fund

Robert K. and Emily Leland Fund
 Robert K. and Emily Leland

Clara Lemmons Estate Fund

Edward E. Lewis Fund

Neva J. Lewis Fund

Ralph and Dorthy Lewis Fund

Light of the World Scholarship Fund

John and Caren Lillie Fund
 Kirby Hughes Gould

Wallace E. and Blanche R. Lillie Permanent Fund

Deloris I. Lindell Memorial Fund

Judith F. Lindley Memorial Music Fund

Frances J. Lindner Memorial Fund

Ralph E. Lindner Memorial Fund

Edythe Lindsey Memorial Fund

William and Stella F. Linter Fund

Linwood Memorial Permanent Fund

Little Eagle Creek Christian Church Legacy Fund

Eugene F. Littler Memorial Fund

Eugene F. Littler - Merriam Christian Church Memorial Fund

Clara A. Livensparger Memorial Fund

Ralph A. and Leona A. Livezey Fund

Living Water Christian Church of Indianapolis Legacy Fund

Ernest C. and May W. Lloyd Fund

Ben Lockhart Memorial Fund

Benjamin F. Lockhart Estate Fund

Mark and Sarah Loewen Fund

Richard and Dolores Lofton Fund

James A. and Lorraine Lollis Fund

Hugh and Elsie Lomax Memorial Fund

Hazel Long Fund

Janet A. Long and Daniel D. Clark Fund

Bill and Lee Longman Permanent Fund

Lowe Family Fund

Luella Lowe Permanent Fund

Marguerite Lowe Memorial Fund

Lubbockview Christian Church, Lubbock, TX Legacy Fund

E and D Lucas Fund

John and Lori Lucas Fund
 Lori and John Lucas
 Melinda K. Mains

Donald T. and Shirley D. Lucey Fund

Warner K. "Honey" and Era Orby "Muna" Ludden Fund
 Mike and Sharon McDonald

D. Wright and Hazel Kindrick Lunsford Fund

Drusilla E. Lyman Fund

Herb and Suzy Lynskey Fund
 Herb and Suzy Lynskey

Brad Lyons - Chalice Press Fund

Mary Bell
 Barbara Blaisdell
 Robert Cornwall
 Elizabeth Evans
 Sandra Harper
 Robert Hill
 Brad Lyons and Courtney Richards
 Jill Michel
 Lee Hull Moses and Robert Moses
 Kirk Ostby
 Jean Pinto
 John Reiter
 Sally Russell
 Stanley Saunders
 D.C. Sills
 Lee Willoughby-Harris
 Jean Woodman

Mary Ellen Lyons Fund

Kathryn M. MacKellar Fund

Theora W. Mackey Memorial Fund

Verna E. Mackie Estate Fund

Robert and Shirley Magee Permanent Fund

Main Street Christian Church, Rushville, IN CWF Memorial Fund

Lawrence H. and Elizabeth W. Maines Fund

Mains Family Fund

Karen L. Johnson
 Melinda K. Mains

Shirley Malaby Fund

Charles A. and Mary Sue Malotte Fund

Darwin A. and Mary Jane Mann Fund

Eleanor and Raymond Manning Fund

Blanche Mansfield Estate Fund

Donald B. Manworren Fund

Patricia Baggett Maples and Claude O. Maples Fund

Patricia Baggett Maples and Claude O. Maples

Winifred Hansen Marcy Fund

DeLoss and Helen Marken Fund

Richard K. and Martha J. Markland Fund

Robert and Elizabeth E. Marquette Fund

Dorothy Margaret Marsh Estate Fund

John Elmore and Mary Florence Marshall Family Fund

James W. and Shari A. Cullumber

Martin Family Fund

Britt and Gail Martin Fund

Randel O. Martin Fund

Roy L. and Roxie J. Martin Continuing Education Fund

Mary Elizabeth Mason Fund

Dr. Elliott K. Massey Permanent Fund

Ruth J. and Bruce B. Matthews Permanent Fund

Lloyd and Iva Mattison Scholarship Fund

Mary C. Mawyer Fund

John and Jeannie May Fund

John and Jeannie May

Meril A. and Marguerite May Fund

Charles O. McAfee, Sr. Fund

Lester G. McAllister General Distribution Permanent Fund

Lester G. McAllister Permanent Fund

Richard L. and Virginia M. McCall Permanent Fund

Rev. and Mrs. C. G. McCallister Memorial Fund

Dr. Raymond F. McCallister, Jr. and Marilee McCallister Permanent Fund

Clayle Franklin McCaw Memorial Fund

John Emory and Maxine Mae Gambs McCaw Permanent Fund

John and Maxine McCaw Scholarship Fund

Clyde B. and Frances C. McClaskey Fund

Mildred McClure Educational Fund

Ray L. and Ruth L. McClurg Fund

Lester McCracken Fund

Sheila J. and Randall J. McCrea Fund

John and Rose McDonnell Fund

Mr. and Mrs. Robert McFarling Fund

Ermel and Woodruff McGregor Fund

Dorothy McKenzie Estate Fund

The Gaynelle McKinney Fund

Gail and Roger McKinney Legacy Fund

Barbara and Mac McLay Permanent Fund

Donald L. (Mac) and Betty McMillan Permanent Fund

L.D. and Doris G. McNiece Permanent Fund

Glen and Gerry McNutt Fund

Frances A. Meador Fund

Bernard and Myrtle Meece Endowment Fund

Bernie and Georgia Meece Scholarship Fund

Rev. Bernie and Georgia Meece Family Fund

Bernard C. and Georgia C. Meece Fund

Richard and Helena Meek Permanent Fund

Virginia S. Meloeny Urban and Global Ministries Fund

Memorial Christian Church, Ephrata, WA Legacy Fund

Memorial Christian Church, Ephrata, WA

Memorial Christian Church, Graham, TX Legacy Fund

Memorial Christian Church, Midland, TX Legacy Fund

Memorial Christian Church of Tulsa Fund

Men's Ministries Endowment Funds

Charles (Buck) Arnold Fund

Paul E. and Ruth W. Few

Douglas (Doug) Benson Fund

Charles R. Bentley Sr. Fund

Jay A. and Mona L. D. Stevenson

Paul Bristol Fund

Lewis Ellis Champ Fund

Daniel C. Crawford Fund

Roscoe Dickerson Fund

Jay A. and Mona L. D. Stevenson

Paul Easton Fund

Jay A. and Mona L. D. Stevenson

Don Eberly Fund

Jay A. and Mona L. D. Stevenson

Paul and Ruth Few Fund

Paul E. and Ruth W. Few

Nathan L. and Claudia N. Higginbotham

Jay A. and Mona L. D. Stevenson

David Garshaw Fund

Jay A. and Mona L. D. Stevenson

General Endowment Fund

Disciples Home Missions

Oscar Haynes Fund

Jay A. and Mona L. D. Stevenson

Dick and Jane Herrington Fund

Jay A. and Mona L. D. Stevenson

Nathan and Claudia Higginbotham Fund

Paul E. and Ruth W. Few

Nathan L. and Claudia N. Higginbotham

Jay A. and Mona L. D. Stevenson

Indiana Disciples Men's Commission Fund

Tom Jewell Fund

Jay A. and Mona L. D. Stevenson

Robert A. "Bob" Johnson Fund

Jay A. and Mona L. D. Stevenson

L. Dean Jones Fund

David J. McCracken Fund

Jay A. and Mona L. D. Stevenson

Jimmie Muckleroy Fund

Jay A. and Mona L. D. Stevenson

Arnold Carl Nelson Jr. Fund

Joel Potts III Fund

Jay A. and Mona L. D. Stevenson

Mark Rutherford Memorial Fund

Jay and Mona Stevenson Fund

Janice L. Dysart

Paul E. and Ruth W. Few

Nathan L. and Claudia N. Higginbotham

Jay A. and Mona L. D. Stevenson

Men's Ministries Endowment Funds Cont.

Milton Summerall Fund

Richie Tumblin Fund

Jay A. and Mona L. D. Stevenson

Merchant Family Fund

Beryl Meritt New Church Support Fund

Beryl Meritt Congregational Operational Permanent Fund

Beryl Meritt Fund

Claudia Merrell Fund, Sayre Christian Church, Sayre, PA

G.L. "Andy" and Dorothy C. Messenger Fund

Leman and Inez Messley Permanent Fund

Mabel Metze Fund

Middleton Memorial Garden Maintenance Fund

Midwest Hispanic Convention Women's Ministry Permanent Fund

Douglas Price Mikell Fund

Jean Miles Memorial Fund

Ray and Wendy Miles Fund

Harold C. and Catharine A. Milham Memorial Fund

Harold C. Milham and Catharine A. Milham Memorial Fund

Rev. J. Stuart and Ruth Mill Children's Ministry Fund

Sylvia E. Mill Fund

Bill and Patsy Miller Permanent Fund

Franklin D. and La Vonta Miller Fund

William L. Miller, Jr. Permanent Fund

Maggie and Stan Mills Fund

Helen A. Mink Memorial Fund

J. T. Minyard Permanent Fund

Donald and Mary Mitchell Fund

Judith and James Mitchell Fund

Judith Mitchell

Lennis D. Mitchell Memorial Fund

Ellen Mitchell

Irvin and June Mitstifer Fund

John and Valya Mobley Fund for Congregational Revitalization in the AL/NW FL Region

John P. and Valya W. Mobley

Leonard and Betty Mohney Fund

Miriam M. Monroe Fund

Calvin P. and Christina R. Moore Fund

Elburn S. Moore Fund

O. Eugene and Rena A. Moore Memorial Fund

Rev. Jess E. and Patricia Jean Moore Fund

Rev. Dr. Kenneth W. Moore Fund

Kent E. and Pamela J. Moore Fund

Milton E. and Dolores J. Moore Endowment Fund for Youth Ministries

William J. and Audra L. Moore Scholarship Fund
Elizabeth Stong Morgan Memorial Fund
Peter and Lynne Morgan Fund
 Peter M. and Lynne Morgan
Deborah Morgan-Stokes Permanent Fund
Emma D. Morris Fund
Rosemary Morse Permanent Fund
C. Manly Morton Fund
Thomas Edward Morton Fund
Hal S. and Ruth Johnson Moseley Fund
Louise Lomax Moseley Permanent Fund
Ruth Johnson Moseley Fund
Donald and Jessie M. Moss Fund
Harold and Sue Moss Fund
William J. and Emily Moss Memorial Fund
Carolyn N. Mott Fund
Mt. Gilead Christian Church, Bloomington, IN Fund
Frank A. Mullen Fund
Jerry and Mary Muncy Fund
 Jerry and Mary Muncy
Charles and Johnie Walker Murphy Fund
Opal F. Murray Permanent Fund
Museville Educational Fund
 Larry D. Smith
Rev. Doran and Jean Myers Fund
Joyce and Russell Myers Fund
 Douglas and Cathy M. Wirt
Charlotte D. and Oran R. Nabors Fund
J.K. and Betty Nail Permanent Fund
Rev. Virgil G. Nalley and Mrs. Myrtle Nye Nalley Endowment Fund
National City Christian Church Foundation Fund - Campbell
National City Christian Church Foundation Fund - Beasley
National Convocation Disciples Women Fund
National Hispanic Women's Ministry Permanent Fund
 Central Pastoral Office for Hispanic Ministries
 Arlene Pimentel

National Benevolent Association Funds

Mark D. Anderson Fund
Rev. Dr. Ben Bohren Leadership Fund
 Cynthia and Terry Zimmerman
 Mark D. Anderson
Jackie Compton Bunch Fund
 Jackie Compton Bunch
 Mark D. Anderson

National Benevolent Association Funds Cont.

Dr. Mark E. Poindexter Wellness Fund

Bill and Sharon Abanathie
 Xochitl Alvizo
 Mark D. Anderson
 Deann Balogh
 Donna Barion
 Sara Blackwood
 Holleigh and Jerry Dolak
 Carole Enwright
 Jill and Ben Frame
 Donald and Diane Gaffney
 Robert and Anne Gee
 Frances Gray
 Stephen Gray
 L. Christie Koetting
 Tony and Kim Lanoue
 April Lewton
 Karen Lim
 William and Diane Loftis
 Rex and Vicky Maddy
 Zachary Martin
 Diana and Lance Payton
 Becky and Mark Poindexter
 Michele Poindexter and Greg Testa
 Timothy Robinson
 David and Kim Rogers
 Scott Rollins
 Elizabeth Schwab
 Jacqueline Shields
 Martha Sorgen
 Amy Spangler-Dunning
 Deborah Tibbits

E. Lee Neal and Clark Bower Family Fund

William Joseph Neely Fund
Nehemiah Fund
Mary Anne Nelson Fund
Jane Nesby Fund
Jane Nesby South Idaho Fund
John and Loretta Nesby Fund
New Hope Christian Church, Winston-Salem, NC Fund
Ernest J. Newborn Sr. Reconciliation Fund
Ernest J. and Janice Newborn Fund
 Mary Jo Wiggins
C. William and Claudine Nichols Fund
Catherine G. Nichols Fund
James Allen and Jean Nichols Fund
Kenneth R. and Eva M. Nickell Fund

Samuel A. Nickols International Fund

Samuel A. and Sharon Y. Nickols
 Jay A. and Mona L. D. Stevenson

Ruth Nieman Estate Fund

J. Arthur Nightingale Memorial Fund

Mildred Nightingale Memorial Fund

Nixa Christian Church, Nixa, MO Legacy Fund

Nixa Christian Church, Nixa, MO

Ray L. and Anna L. Nixon Fund

Ray L. and Anna L. Nixon/Raymore Christian Church Fund

Mr. and Mrs. James Wesley Noe Sr. Memorial Fund

Dorothy M. and John B. Nolan Fund

North Central Christian Church, San Antonio Legacy Fund

North Christian Church, Columbus, IN Legacy Fund

Sheryl Elston and David Hamilton

Northeast Area of the Christian Church of Mid-America Legacy Fund

Perry Christian Church, Perry, MO
 Jay A. and Mona L. D. Stevenson

Northeastern Region All Saints Funds

Rev. Angel Bonilla Fund

Central Church of Christ, Buffalo, NY Fund

Church of Christ, Felts Mills, NY Fund

Community Christian Wurlitzer Park, Tonawanda, NY Fund

COVID 19 Memorial Fund

Eagle Mills Christian Church, Troy, NY Fund

Everett Christian Church, Everett, MA Fund

First Christian Church, Rochester/Henrietta, NY Fund

First Christian Church, Springfield, MA Fund

Forest Avenue Christian Church, Buffalo, NY Fund

Friendship Christian Church, New Brunswick, NJ Fund

Rev. Richard Hemann Fund

Ima Jean Kidd Fund

Charles Lamb Fund

Paul Anthony Leslie Fund

Carol Leslie

Robert Lutot Fund

Main Street Christian Church, Haverhill, MA Fund

Rev. Philius Nicolas Fund

Richmond Avenue Church of Christ, Buffalo, NY Fund

Ron Strong Fund

Rev. Dr. Richard Sturm Fund

Bess Terry Fund

University Christian Church, Buffalo, NY Fund

Williamsburg Christian Church, Brooklyn, NY Fund

Northeastern Region - Williamsburg Christian Church Legacy Fund

Northern Lights - Mount Vernon, WA Fund

Northside Christian Church, St. Louis, MO Legacy Fund

Northview/Rich Valley Christian Church Kokomo, IN Legacy Fund

Northwest United Protestant Church, Richland, WA Legacy Fund

Northwest United Protestant Church, Richland, WA

Edward and Eloise Norton Permanent Fund

Nueva Vida Christian Church Legacy Fund

Oak Cliff Christian Church, Dallas, TX Legacy Fund

Oak Cliff Christian Church, Dallas, TX

Oaks Christian Church, Houston, TX Legacy Fund

Oaks Christian Church, Houston, TX

Anna Dee O'Brien Permanent Fund

Enrique T. Ocasio and Carmen R. Fernández Fund

Office of the General Minister and President Endowment

Ogden Christian Church Fund

Orv and Jo Oglesby Fund

Oklahoma Region Capitol Hill Christian Church Legacy Fund

Oklahoma Region Iglesia Cristiana de Capitol Hill DMF Fund

Oldtimers' Grapevine Fund

The Oldtimers' Grapevine

George and Sue Oliver Fund

Olmsted Christian Church Legacy Fund

Gilford E. and Denise D. Olmsted Fund

Gilford, Denise, and John Olmsted Permanent Fund for Disciples Peace Fellowship

Arthur Eugene and Charlotte Eileen Olson Fund

Laurence Oman Family Fund

Ronald and Nola Osborn Fund

Estate of Ronald E. Osborn

Sally Fleming and Marvin G. Osborn Fund

Jeff, Erin and Lakin Osmus Family Fund

Harold and Mary Otto Permanent Fund

George Earle and Margaret Owen Fund

O. Gene and Fannie Ownby Fund

Emily O. Smith

Ozark Highlands Christian Church Fund

Pacific Avenue Fund

Margaret Paddock Memorial Fund

Kirby Page Peace Internship Fund

Daniel Adolphson
 Ronald J. Allen and Linda McKiernan-Allen
 Sophia Barnett
 Ben Bohren
 Rebecca and David Brown
 Minta J. Colburn
 Disciples Home Missions
 Samuel W. and Mary M. Elliott
 Alexis Gammon
 James Gawne
 Dick and Mindy Hamm
 Helen Hempfling and Bruce Ervin
 Nita Floe Hempfling
 Philip Jones
 David Kenley
 Michael Kinnamon
 Jon and Melba Lacey
 Rebecca Littlejohn
 Donna H. and Jerry D. Martin
 Linda McCrae
 Nichols Family Foundation Fund
 Phoebe Spier
 Richard L. and Diane Spleth
 Don and Leanne Stump
 Sharon Watkins and Rick Lowery
 Jennifer Williams

Mark and Debra Palmer Permanent Fund

Randall Palmer and Daniel Leach Fund

Park Avenue Christian Church of Titusville, FL Fund
Park Avenue Christian Church, Tucson, AZ Legacy Fund
Karl M. and Frances N. Parker Memorial Fund
Ollie and Bea Parker Fund
Rev. Patricia Ann Parker Memorial Scholarship Fund
Parma Christian Church (Ohio) Legacy Fund
 Parma Christian Church, Parma, OH

Paul and Grace Patrick Memorial Fund

Harriet M. and Robert T. Peake Fund
Maurine S. Peake Permanent Fund
William T. Percy Fund for New Church Development in Arizona
Floyd and Carla Pearson Fund
Dorothy L. Penning Memorial Fund

Pennsylvania All Saints Funds

Lois Jean Adam Fund
Thaddaeus B. Allen Fund
 Christian Church in Pennsylvania
William B. Allen Fund

Pennsylvania All Saints Funds Cont.

Reverend A. Boyd and Esther Bayne Keys Fund
Lisa Buday Fund
Central Christian Church Hermitage Fund
 Central Christian Church, Hermitage, PA
East Side Church - Sharon Fund
First Christian Church Beaver Falls Fund
First Christian Church Dravosburg Fund
 Christian Church in Pennsylvania
First Christian Church New Castle Fund
First Christian Church Scranton Fund
 Robert W. and Debora H. Perry
First Christian Church Washington Disciples Women's Fund
First Christian Church Washington Fund
Richard Graham Fund
J. W. Hormell Fund
Charles and Anne G. Hunt & Evan and Marie A. Lewis Fund
Norman Hunt Fund
Cletus L. Hull, III Fund
 Cletus L. Hull III
Robert E. Kelsey and Kenneth R. Kelsey Fund
 Sandra Kelsey
Jim E. Linn, Jr. Fund
 First Christian Church, Dravosburg, PA
The McDormand Family Fund
Mark A. Montgomery Fund
David B. Morris Fund
Rabe-Gunter In Honor Of All The Saints Who Have Shown Us Jesus
Gaylord H. Resseguie Fund
Sayre Christian Church Fund
Hannah Marie Simpson Fund
 Matthew and Cayla Rosine
United Christian Church California Fund
 United Christian Church, Coal Center, PA

M.D. and Mary Joan Penry Permanent Fund

Lary M. and S. Diane Hill
 Steve and Melanie Mitchell

Pension Fund 13th Check Support Fund

Jay A. and Mona L. D. Stevenson

Jimmy Percival Fund

Rev. Feliberto Pereira Fund

Tom Hawley
 Judith A. Meneghin
 Mandy and Kyle Simpson
 Johnny and Deborah Wray

Carl D. Persun Memorial Fund

Oris L. and Mary Athaline Peterson Memorial Fund
Stanley M. and Margaret L. Peterson Permanent Fund
Peterson Youth Ministry Permanent Fund
Martha H. Pettrey Fund
Petunia Christian Church, Wytheville, VA Arvella Brown Fund
Allen and Linda Peyton Fund
Phillips University Legacy Foundation Permanent Fund
 Kirby Hughes Gould
Merle and Phyllis Phillips Family Fund
Philip R. Phillips Memorial Fund
William Glen Phipps Fund
Doris Anne Pierce Fund in Memory of E.J. and Lena Barnett
Doris Anne Pierce Fund
Doris Anne and Pauline Pierce Fund
James H. "Jim" and Virginia Pingleton Fund
Virginia Pingleton Fund
Marise Piper Permanent Fund
Heber H. Pitman and the Doris R. Pitman Memorial Fund
Lawrence E. and Faith I. Pitman Fund
Lucille D. Porter Fund
Marilyn and Calvin Porter Fund
 Calvin L. and Marilyn P. Porter
Gladys W. Potter Memorial Fund
Howard D. Prather Estate Fund
Larry and Esther Price Permanent Fund
Senator Marian L. Price Permanent Fund
Jim and Von Prichard Permanent Fund
Pruett Memorial Fund
Samuel F. and Catherine J. Pugh Fund
 Larry S. and Nancy M. Pugh
Ann C. Puls Fund
Keith W. and Mary Louise Purscell Fund
Maurice P. Radmacher Fund
Rambo Committee - Katherine H. Willis Fund
Rambo Committee - Dr. Christopher and Mary Deen Fund
Rambo Committee - Marilyn Amann Nursing Scholarship Fund
 Rambo Committee, Inc.
Lester and Mildred Rampley Fund
Leroy P. Ramsdell Fund
Harry Ransler Permanent Fund
Laurence N. and Leota A. Ratts Fund
Raymore Christian Church McDermet Outreach Endowment Fund
Thomas and May Reather Fund
Reconciliation Mission Endowment Fund

Red Bridge Christian Church, Kansas City, MO Legacy Fund
Red Rock Christian Church, Boise, ID Endowment Fund
Rev. Frank and Esther Reece Fund
Dorothy M. Reed Permanent Fund
 David C. and Bethel J. Wentz
Forrest Milton Reed Fund
James C. and Mildred C. Reed Memorial Fund
James R. and Lucille B. Reed Fund for Clergy Stewardship Education
James R. and Lucille B. Reed Fund
Todd and Michele Reed Fund
Ray Reeder Fund
 Estate of Ray Reeder
Samuel G. Reel, Jr. Fund
Forest McKee Reeves and Sara Blair Reeves Fund
Regional Ministry All Saints Fund
 Thaddaeus B. and Jennifer R. Allen
 Robin and George Blakemore
 Ruth A. Fletcher and Ronald C. Greene
 Jay Hartley
 John M. and Jeannine M. May
 Ronald and Louise Ann Routledge
 Jim and Jackie Summers
Irene Reindl Permanent Fund
Paul A. and Wanda A. Remick Memorial Fund
Velma J. Rexroth Estate Fund
Fidel and Helen Reyes Fund
Dr. Neil F. and Cheryl D. Reynolds Fund
Vera B. Reynolds Fund
Bob and Margie Rice Fund
Elbert and Marvel Rice Fund
Richardson Family Fund
R. J. and Mary Nell Wallace Richardson Fund
Troy and Agnes Richardson Fund
 Alice L. Coleman
Teresa Richey Fund
Emmett G. and Erma C. Rickard Fund
Erma C. Rickard Memorial Fund
Lester Rickman Fund
Ridgeview Christian Church Legacy Fund
Riethman Family Fund
Jennifer Riggs Fund
 Jennifer Riggs
Elizabeth Riley Estate Fund
Jo and Rebecca Riley Fund
Kirk Ringer Family Fund
Addie Arthur Risser Fund
Pat and J.R. Ritchey Permanent Fund

Riverside Christian Church, Fort Worth, TX
Legacy Fund
Howard and Mary Jane Rix Permanent Fund
D. Y. and Harriet Donaldson and Arno L. and Elizabeth
Roach Memorial Fund
Ruth Roan Fund
Roberson Bagwell Music Endowment Fund
Dee L. Roberts Fund
Bill and Benny Robertson Fund
 Bennita M. Robertson
John Robertson Memorial Fund
Mary Lu Robertson Permanent Fund
Barry and Patti Robinson Fund
Carl B. and Esther L. Robinson Fund
George M. and Elizabeth V. Robinson Fund
Sally A. Robinson Fund
Ralph W. Roche Memorial Fund
Nathan Gray Rode Permanent Fund
 William E. and Patricia V. Crowl
 Roy and Sharyl Inlow
 Timothy and Camilla Laughlin
 Joseph and Paula McGee
 John W. and Deborah M. Rode
Jesús Maria “Don Suncho” Rodríguez Scholarship Fund
Betty Jane and John D. Roe Scholarship Fund
Howard G. and Opal F. Rohrer Endowment Fund
Hermann Roschen Fund in Memory of
Dr. Peter Ainslie
Jack Melvin Rose Fund
Bill and Donna Rose-Heim Fund
 Claudia Boosman
 Ruby Brower
 Kirby Hughes Gould
 Tom Minges
 Donna and Bill Rose-Heim
Rosine Family Fund
 Matthew and Cayla Rosine
Lon A. and Peggy L. Rosine Endowment Fund
 Matthew and Cayla Rosine
Verla M. Ross Memorial Fund
George P. and Vera E. Rossman Memorial Fund
Rountree Disciples of Christ Historical Society
Endowment Fund
Grace Vivian Alexander Rudolph Fund
Lawrence and Dorothy Rueff Fund
Gwen Runner Permanent Fund
Gwen Runner Fund for Operations
Saguaro Christian Church, Tucson, AZ Archie Dale Ellis
Scholarship Fund
Saint Andrew Christian Church, Arlington, TX
Legacy Fund

L. Neil and Dorothy Sallee Fund
Mary Isabel Sandin Estate Fund
José David (Bobby) Santiago “Scholarship” Fund
 Samuel Santiago
Don and Bev Sarton Permanent Fund
 Donald R. Sarton
Rose Loretta and Florence Lovinna Sass
Permanent Fund
Charles G. and Marian L. Sather Fund
Phil and Ardath Saunders Permanent Fund
Ralph H. and Martha G. Saunders Family Fund
John and Lucy Schaffer Estate Fund
Schales Permanent Fund
Lucille Scheuffele Permanent Fund
John A. and Althea W. Schiffman Fund
Alice G. Schilling Fund
William and Elizabeth Schiphorst Fund
 Elizabeth A. and C. William Schiphorst, Jr.
Schiphorst Fund
Jerry and Louise Schleich Permanent Fund
Mary Schmidt, Greg Schmidt and Shelley
Schmidt Fund
Harold and Marilyn Schneider Fund
Schroeder Family Fund
Mr. and Mrs. George Schubert Fund
Nelson and Ann Schuster Permanent Fund
Margaret J. Schwartz Estate Permanent Fund
Rose S. Scofield Missionary Fund
Ed and Floydette Seal Fund
Mary Dudley and James M. Seale Fund
Second Christian Church of Bloomington, IL
Permanent Fund
Second Christian Church, Warren, OH Legacy Fund
Dorothy Morton Sessions Fund
Seventh & Eighth United Christian Church Legacy Fund
JeNeill Sewell Fund
Edna Shain Fund
Wayne Shaneyfelt Fund
Rolland H. and Laura Frances Sheafor
Scholarship Fund
The Shelton Family Scholarship Fund
 John P. and Shonna Shearson
 Linda J. Shelton
Robert M. Sherley Fund
Dana L. and William L. Sherwood Fund
 William L. and Dana L. Sherwood
Mr. and Mrs. E.A. Shire Memorial Fund
Athal and Fran Shrout Fund
Luanne S. Shrout Fund
 Luanne Shrout

Shubert Family Fund
Mildred Shultz Memorial Fund
Carroll B. Simmons Fund
Mr. and Mrs. Clarence Simmons Memorial Fund
Howard E. and Elizabeth D. Simonson Fund
Martha Bowman Simpson Fund
Thomas and Nelda Simpson Scholarship Fund
Ralph and Chloe Sims Fund
Charles E. and Virgene L. Skiver Fund
 Estate of Charles E. Skiver
Mike and Mark Slight Memorial Fund
Harold B. Slanker Memorial Fund
Slater Christian Church, Slater, MO Rural Ministry
Legacy Fund
Kenneth B. and Evelyn Fey Slater Fund
Elsie J. Sloan and Harold and Laverne Theuer
Memorial Fund
Virgil A. and Florence M. Sly Fund
Cecelia Smith Permanent Fund
Doug Smith and Kate Moyer Fund
Gary E. and Roberta (Kistler) Smith Fund
Helen J. Smith Fund
Howard and Marian Smith Fund
Joseph M. and Winnifred W. Smith Fund
Leslie M. and Frances Smith Fund
Leslie R. and Ruth Moss Smith Memorial Fund
 Larry L.R. Smith
Lucinda Smith and Kasandra M. Smith
Permanent Fund
Ralph Lynwood and Emily O. Smith Fund
 Emily O. Smith
Richard H. and Alice Underwood Smith Fund
Roy and Grace Smith Fund
Ruth A. Elam Smith and Mabel H. Newlon Knight
Memorial Fund
Sally A. Smith Permanent Fund
Stanley D. Smith Fund
Snell Family Fund
 Bob Snell
Camille and James C. Snider Fund
Mary Kathryn Snider Fund
S.O.A.P. Fund
Wilbur Somerton Trust Fund
Joan A. Sorber Fund
South Gate First Christian Church Fund
South Idaho Endowment Fund
South Idaho Regional Church Camp Capital and
Maintenance Fund
South Idaho Youth Camp Participation Fund
Southview Christian Church, Lincoln, NE Martin and
Darner Fund

James I. and Joanne S. Spainhower Fund
Stella Irene Cox Spainhower Memorial Fund
Spangler Family Fund
Spaulding Memorial Trust Fund
Helen F. Spaulding Board of Directors Fund
Helen F. Spaulding Council on Christian Unity Fund
Helen F. Spaulding Office of General Minister and
President Fund
Helen F. Spaulding Raymore Christian Church Fund
Helen F. Spaulding General Ministries Fund
William R. (Bill) Speaker Memorial Fund
Harry Spear Memorial Fund
Teresa Spear Fund
 Teresa Spear
Richard and Esther Spellman Fund
Springfield Christian Church, Jacksonville, FL
Permanent Fund
St. Paul’s Christian Church Outreach Endowment Fund
 St. Paul’s Christian Church, Raleigh, NC
Norman and Dorothy Stacey Endowment Fund
Staggers Family Fund
Cecile and Vernon S. Stagner Fund
Daniel J. and Mabel I. Stahly Fund
James E. Stalcup Fund
Joe A. and Nancy Vaughn Stalcup Congregational
Historians Fund
Joe A. and Nancy Vaughn Stalcup Endowment Fund
Joe A. and Nancy Vaughn Stalcup Lectures on
Christian Unity Fund
Joe A. and Nancy Vaughn Stalcup Unity
Conference Fund
Joe A. and Nancy Vaughn Stalcup Fund
Lloyd W. Stalder Estate Fund
William and Gladys Stanton Fund
Carl B. Staplin Fund for Music
Martha Jane Starr - Great Start Fund
Steele-Lantis Family Fund
Pearl and Emil Steinhaus Fund
Lawrence S. and Frances L. Steinmetz Fund
 Susan and Tracey McCluskey
Phillip S. Steinmetz Memorial Fund
 Susan and Tracey McCluskey
Sara Stephens Estate Fund
Alvin H. and Ruth I. Stephenson Fund
Edwin L. and Teresa B. Stephenson Fund
Helen L. Stephenson Fund
Walter Stephenson and Lucille Carman
Stephenson Fund
Danny Stewart Fund for Global Ministries
H. Y. Stewart Fund
Stickley Institute Fund

Jack W. Stocker Memorial Fund
 Lloyd and Julie Stockwell Fund
 Mildred I. Stone Fund
 James E. and Ruby Strain Fund
 Doris V. Stratton Permanent Fund
 Ruth E. Straw Fund
 Bert and Norma Strickland Permanent Fund
 Herman H. Strietmann Memorial Fund
 Myra Stubblefield Estate Fund
 Robert G. and Frances G. Sulanke Fund
 Sun City Christian Church in Arizona Fund
 Willard C. and Alice L. Sutherland Fund
 Bert and Pauline Sutton Christian Education Fund
 Karl D. and Charlotte R. Swain Fund
 Estate of Karl D. Swain
 Madeline D. Swander Estate Fund
 G. Goodwin and Tiny W. Sweatt Fund
 Tall Oaks Conference Center Permanent Fund
 Reba Talley Estate Fund
 Joe and Martha Tarpley Fund
 Tate Family Fund
 Martin and Georgia Tate Fund
 Lloyd E. and Janice K. Tatlock Fund
 Tatum Family Fund
 Jean and David Tatum
 George Oliver and Martha J. Taylor Memorial Fund
 Elizabeth Head Phillips, Pauline Head, and Miriam H. Teagarden Fund
 Lelia R. Teaney Estate Fund
 Kenneth L. and Wanda J. Teegarden Distinguished Leadership Fund
 Byston C. and Dorothy B. Temple Fund
 Hazelmae Taylor Temple Memorial Fund
 Hazelmae and Joseph Temple Fund
 Walter William and Cora Selzer Tharp Fund
 Mary Kay Thelman Fund
 Floyd and Ruth Thiel Fund
 Third Christian Church, Indianapolis, IN Fund
 Jim and Maida Thokey Fund
 Shirley Alma Thomas Fund
 Frazer and Loris Thomason Ministry Fund
 Laird and Evelyn Thomason Memorial Fund
 Disciples Home, Inc.
 Beulah Thompson Memorial Fund
 Arthur I. Thorpe Permanent Fund
 Jack E. and Fanelle H. Thurman Fund
 Betty Timms and Lynne Weitz Children's Fund
 Don and Beverly Tinsley Permanent Fund
 Cheryl Tinsley Fund
 Cheryl Tinsley

Don Tinsley Memorial Fund
 Adelbert H. and Emily D. Tisdall Fund
 J. Todd Memorial Scholarship Fund
 George L. and Janet P. Tolman Permanent Fund
 Neil E. and Sandra R. Topliffe Fund
 Robert L. Townsend Fund
 Willard C. and Katherine E. Townsend Fund
 Herman and Joan Trauernicht Fund
 Minnie E. Treadway Memorial Fund
 John D. and Marilyn L. Trefzger and Family Fund
 Trinity Christian Church, Mechanicsville, VA Ministerial Education and Sabbatical Fund
 Clyde and Hazel Trumbull Permanent Education Fund
 Hazel Trumbull Permanent Education Fund
 Emily Tubman Trust Fund
 James A. and Dora P. Turner Fund
 Norwood and Wilma More Tye Fund
 Henry and Mary Woodman Tyler Fund
 Henry Hart and Mary Jane Tyler Fund
 Beau Underwood and Casey Osterkamp Fund
 Beau Underwood and Casey Osterkamp
 United Christian Church of Charlotte Hall, MD Fund
 United Christian and Baptist Church, Kalona, IA Legacy Fund
 Unity Christian Church, Arthur Addison Permanent Scholarship Fund
 Unity Christian Church, Fort Myers, FL
 University Christian Church of Berkeley Endowment Fund
 University Christian Church, Boise, ID Endowment Fund
 University Christian Church, Normal, IL Fund
 University Park Christian Church, Indianapolis, IN Fund
 University Place Christian Church, Champaign, IL Fund
 John C. and Lela V. Updegraff Fund
 Urbandale Christian Church, Dallas, TX Fund
 Irene Van Boskirk Fund
 Robert and Sarah Van De Water Fund
 Chester R. and Wilma M. Vanzant Scholarship Fund
 Betty Jane Veach Fund
 Wesley Veatch Family Fund
 Lydia M. Velázquez Fund
 Rev. Joanne L. VerBurg and Dr. E. Carole Tyler Fund
 Karen L. Johnson
 Lori and John Lucas
 Melinda K. Mains
 Gerald F. Vesey Estate Fund
 Demetress Rudward Villier Permanent Fund
 Michael C. and Suanne Yarbrough
 A.B. and Martha S. Vimont Fund

Vistula Christian Church, Bristol, IN Legacy Fund
 Clarence James "Bud" Votava Fund
 Rick and Doris Wacker Fund in Memory of Mary E. Hawkins
 Cora Lee Wagner and Family Fund
 Lelia Frances Wainwright Estate Fund
 Halsey and Mildred Wakelin Family Ministries Fund
 Elsie Walburn Permanent Fund
 Linda Favinger Waldron Fund
 Camella R. Walker Fund
 Rev. Dr. Claude and Sherley Walker Fund
 Gladys Walker Fund of First Christian Church, Henderson, KY
 Joe and Susan Walker Fund
 W. H. and Fannie Walker Fund
 Gary and Linda Walling Fund
 Gary L. and Linda H. Walling
 M. L. and Mary Elizabeth Walling Fund
 Mary and Andrew Fry
 Carolyn and Michael Reedy
 Barbara M. Wallis Fund
 Walnut Hills Christian Church, Cincinnati, OH Legacy Fund
 Richard and Dorothy Walters Fund
 W. Raleigh Walters, Ethyl Walters, and Audrey Walters Schuetz Memorial Fund
 Linda Warfield Fund
 Marion and Carolyn Warpenburg Fund
 Warrick Family Fund
 Evelyn N. and Harold R. Watkins Fund
 Linda Lee and Roger Watkins Fund
 Sharon Watkins and Rick Lowery OGMP Fund
 Sharon Watkins and Rick Lowery
 Charlotte Draper Watson Memorial Fund
 Julian G. Watson Memorial Fund
 Lloyd T. and Catherine D. Watson Fund
 Melvin Ray Watson Estate Fund
 Valerie Hall Watters Fund
 Ray and Kathryn Weaver Fund
 Thelma H. Weaver Scholarship Fund
 Mr. and Mrs. James B. Webb Memorial Fund
 Suzanne Webb Permanent Fund
 Daniel R. and Nel Gammon Webster Fund

Week of Compassion Funds
 The Alabaster Box Fund
 Kathy and Glenn Albers Endowment Fund
 Madison Ann Allen Endowment Fund
 Gwendolyn and William Allen Endowment Fund
 Artesia (CA) Christian Church Endowment Fund

Week of Compassion Funds Cont.
 Spencer P. and Kitty Austin Fund
 Gladys S. Ball Fund
 E. Patricia Clark Barbier Endowment Fund
 Gary Barnard - FCC, Wadsworth, OH Endowment Fund
 Barnes Family Fund
 Dawn and Jonathan Spencer Barnes
 Barton College Campus Compassion Fund
 Battery Park Christian Church Circle of Compassion Endowment Fund
 Diane Faires Beadle Endowment Fund
 Diane Faires Beadle
 Maya Beadle Endowment Fund
 Diane Faires Beadle
 Beargrass Christian Church, Louisville, KY Circle of Compassion Fund
 Bellevue Christian Church, Bellevue, WA Circle of Compassion Fund
 Lucille Benson Memorial Fund
 Bethany Memorial Church (WV) Circle of Compassion Fund
 Maurine K. and Robert L. Blackwell Fund
 Board of Stewards/Advisory Committee Fund
 Ben Chou
 Jake Caldwell
 Lori and Andy Magnum
 Judith A. Meneghin
 Jeri Sias
 Don and Donna Bohlcke Fund
 Mary and Houston Bowers Fund
 Sue O. Bowman Fund
 Susan Bowman
 Nancy Brewer Endowment Fund
 First Christian Church, Shelbyville, TN
 Delores A. Bryan Fund
 Gertrude Burke Fund
 Jerry S. and Deborah K. Butt Fund
 California Christian Church, California, KY Endowment Fund
 Sharon and Darrell Cantrell Fund
 Rev. Nell M. Carlson Endowment Fund
 Estate of Nell M. Carlson
 Carrollton Christian Church - Kathryn Mullikin Fund
 Evelyn Cartmill Fund
 Case-Adams Family Fund
 Cates Family Fund
 Central Christian Church, Corpus Christi, TX Circle of Compassion Fund
 Central Christian Church, Dallas, TX Legacy Fund
 Central Christian Church, Dallas, TX

Week of Compassion Funds Cont.

Central Christian Church, Decatur, IL Circle of Compassion Fund
 Central Christian Church, Hermitage, PA Circle of Compassion Fund
 Central Christian Church, Indianapolis, IN Circle of Compassion Fund
 Central Christian Church, Lexington, KY Bicentennial Circle of Compassion Fund
 Jo Ann Chance Fund
 Jo Ann Chance
 Cherokee Christian Church, Prairie Village, KS Circle of Compassion Fund
 Christian Church of Arlington Heights, IL Circle of Compassion Fund
 Christian Church of the Cumberlands, Crossville, TN Fund
 Christian Church in Kansas Disciples Women Fund
 Christian Church of Wilkinsburg Fund
 Amy and Guido Climer Fund
 Clubb-Brown Family Endowment Fund
 Colonial Place Christian Church, Richmond, VA Legacy Fund
 Community Christian Church, North Canton, OH Circle of Compassion Fund
 Cook Family - Park Hill Christian Church, North Little Rock, AR Circle of Compassion Fund
 Amena Cristovao Cooper Endowment Fund
 Joel Cooper
 Covina Christian Church, Covina, CA Permanent Fund
 Crain-Johnson Family Fund
 Tiffany Crain
 Brandon Johnson
 Creekwood Christian Church, Flower Mound, TX Circle of Compassion Fund
 Creekwood Christian Church, Flower Mound, TX
 Ruth Cunningham - FCC, Oak Ridge, TN Fund
 Jim and Carol Cure Fund
 Rev. McKinna Daugherty Fund
 McKinna Daugherty
 Davis Family Fund
 Wyman P. Deck Fund
 Delaney Family Fund
 Howard E. and Mary Lou S. Dentler Fund
 Tommy and Marilyn Dobson Fund
 Mary A. Dossey Fund
 Draper Christian Church, Draper, VA Circle of Compassion Fund
 Driscoll - Crews Fund
 Marshall and Barbara Dunn Fund
 Billie Joe and Margaret Ann Earwood Fund

Week of Compassion Funds Cont.

Curt and Janet Miller Ehrmantraut Fund
 Vickie Batzka
 Eldora Christian Church Fund
 Gene and Lee Elliott Fund
 Englewood Christian Church, Yakima, WA Circle of Compassion Fund
 April Yates Hardy
 Bessie Rowenna Erbach Endowment Fund
 Eureka Christian Church, Eureka, IL Circle of Compassion Fund
 John Farrow Evans Fund
 Faith First Community Church, Davenport, IA Circle of Compassion Fund
 Faith Christian Church, Memphis, TN Circle of Compassion Fund
 First Christian Church, Ashland, KY Circle of Compassion Fund
 First Christian Church, Bellflower, CA Circle of Compassion Fund
 First Christian Church, Bloomington, IN Circle of Compassion Fund
 First Christian Church, Bowling Green, KY Circle of Compassion Endowment Fund
 First Christian Church, Bucyrus, OH Circle of Compassion Fund
 First Christian Church, Burbank, CA Circle of Compassion Fund
 First Christian Church, Charlotte, NC Circle of Compassion Fund
 First Christian Church, Charlotte, NC
 First Christian Church, Chattanooga, TN 150th Anniversary Circle of Compassion Fund
 First Christian Church, Crawfordsville, IN Circle of Compassion Fund
 First Christian Church, Crawfordsville, IN
 First Christian Church, Duncan, OK Circle of Compassion Endowment Fund
 First Christian Church, Duncanville, TX Circle of Compassion Fund
 First Christian Church, Edmond, OK Circle of Compassion Permanent Fund
 First Christian Church, Falls Church, VA Circle of Compassion Fund
 First Christian Church, Fort Pierce, FL Endowment Fund
 First Christian Church, Fullerton, CA Circle of Compassion Fund
 First Christian Church, Gibson City, IL Circle of Compassion Fund
 First Christian Church, Greenville, MS - Rev. and Mrs. Thomas B. Henderson Fund

Week of Compassion Funds Cont.

First Christian Church, Harrisonville, MO Bill and Mabel Maxon Memorial Circle of Compassion Fund
 William P. and Michelle Maxon
 First Christian Church, Hoisington, KS Fund
 First Christian Church, Jefferson City, MO Circle of Compassion Fund
 John Kuebler
 First Christian Church, Jeffersonville, IN Fund
 First Christian Church, Kent, WA Circle of Compassion Fund
 First Christian Church, Keokuk, IA Circle of Compassion Fund
 First Christian Church, Knoxville, TN Mary Houchins Circle of Compassion Fund
 First Christian Church, Knoxville, TN Don and Dorothy Webster Circle of Compassion Endowment Fund
 First Christian Church, Kokomo, IN Endowment Fund
 First Christian Church, Lufkin, TX Circle of Compassion Fund
 First Christian Church, Madisonville, KY Circle of Compassion Fund
 First Christian Church, Meridian, MS Circle of Compassion Endowment Fund
 First Christian Church, Moline, IL Circle of Compassion Endowment Fund
 First Christian Church, Mount Carmel, IL Circle of Compassion Fund
 First Christian Church, North Kansas City, MO 100th Anniversary Circle of Compassion Fund
 First Christian Church, North Kansas City, MO
 First Christian Church, Paris, TN Circle of Compassion Endowment Fund
 First Christian Church, Pekin, IL Circle of Compassion Fund
 First Christian Church, Pekin, IL
 First Christian Church, Pikeville, KY Circle of Compassion Fund
 First Christian Church, Sacramento, CA Circle of Compassion Fund
 First Christian Church, Tacoma, WA Circle of Compassion Fund
 First Christian Church, Tyler, TX Circle of Compassion Fund
 First Christian Church, Wadsworth, OH Circle of Compassion Fund
 First Christian Church, Wagoner, OK Circle of Compassion Fund
 First Christian Church, West Point, MS - CWF Circle of Compassion Endowment Fund
 First Christian Church, Wheeling, WV Circle of Compassion Fund
 First Christian Church, Wilmington, DE Fund

Week of Compassion Funds Cont.

First Christian Church, Winder, GA Circle of Compassion Permanent Fund
 Roger W. and Dixie L. Fisher Fund
 Mary Cunningham
 Carl Fisher
 Mary Humlicek
 Stuart and Linda Smith
 John and Sarah Yonker
 Doris Kennedy Forcum Endowment Fund
 Arlene Franks Fund
 Adam Frieberg Fund
 Friends of the West Virginia Region Circle of Compassion Fund
 General Endowment Fund
 Guy B. Adams and Martha Jolly
 Bethany Christian Church, Houston, TX
 First Christian Church, Pendleton, OR
 Estate of Marilyn Taylor
 Linda and Wayne George Fund
 Amy C. Gopp Endowment Fund
 Gwen Graham Endowment Fund
 Greater Purpose Community Church, Santa Cruz, CA Fund
 Kenneth Gregg - First Christian Church, Perry, IA Circle of Compassion Fund
 Gulden Family Fund
 Rebecca Hale and Jess Hale Fund
 Jess Hale
 Rebecca Hale
 Hamilton Christian Church Circle of Compassion Fund
 Wayne and Joan Hamilton Memorial Fund
 Mike and Yvonne Hamilton
 Hamilton-Arnold Fund
 Vy Nguyen
 Hanover Avenue Christian Church, Richmond, VA Endowment Fund
 Shirley Maurine Smith Harper Fund
 Sandra K. Harper
 Paul and Barbara Haugland Endowment Fund
 Iris Bunch Henderson Fund
 Joe and Bobbie Graff Hendrixson Fund
 Hernandez-Becerra Family Fund
 Vy Nguyen
 Janet Herrod Fund
 Marilynne Hill Fund
 Hill - Reckling Fund
 Hillyer Memorial Christian Church, Raleigh, NC Circle of Compassion Fund

Week of Compassion Funds Cont.

Rev. Donald B. Hiscox and Karen Vroman Fund
Donald B. Hiscox and Karen S. Vroman

Sabra A. Hodnett Fund

Holly Ridge - Lakeside C.C. Fund

Hood River Valley Christian Church, Hood River, OR Circle of Compassion Fund

Hoofin for Jesus Fund

Hope Fund

Houchins-Williams Fund

Rev. Charles E. F. Howe Fund

Irene Hudson Fund

Rev. W. Kenneth Hughes Fund

Laura R. Hulse Endowment Fund

Hurstbourne Christian Church, Louisville, KY Circle of Compassion Fund

Megan and Willie Huston Fund

Illinois Valley Cluster Circle of Compassion Fund
Jane Cahill
Jill Gresham
Shari Rich
Christine Roberts
Sunnyland Christian Church, Washington, IL
Dwight and Diane Winnett
Pearl Witte

Mary Ellen Janeway Permanent Fund

Myrna J. Jones and Stephen V. Cranford Endowment Fund
Anthony and Jennifer Cranford

Betty Jones Fund

Karl Road Christian Church, Columbus, OH Circle of Compassion Fund

Averell J. Karstens Fund

Thomas Michael Karunas Fund

George and Linda Kemp Fund

Robert and Elaine Kennel Fund

Kim-Hengst Family Endowment Fund
Cindy Kim-Hengst

Kingsway Christian Church, Germantown, TN Circle of Compassion Fund

David and Yusnani Kirkman Fund
David and Yusnani Y. Kirkman

Thomas and Nancy Kleinert Fund
Thomas Kleinert

Kozak Family Fund
Grace Kozak
Vy Nguyen

Lake Harriet Christian Church Endowment Fund

John and Martha Lambert Fund

Robert A. and Mary Langston Fund

Week of Compassion Funds Cont.

Donald and Alice Jane Lanier Permanent Fund
Donald L. and Alice Jane Lanier

Rev. Paul and Patricia Lantis Fund
Patricia Lantis

Rev. Allison Lanza Fund

Janice L. Legg Endowment Fund
Carol Daugherty

Lindenwood Christian Church SAM-SAL Fund
Jeffrey C. and Cynthia H. Smith

Richard and Dolores Lofton Fund

William A. Longman Memorial Fund

Love Fund

Lucey Permanent Fund

Carolyn Wood Mackaman - Mackaman Family Fund

Mantua Center Christian Church Circle of Compassion Fund

Jerry D. and Donna Heath Martin Family Endowment Fund
Donna H. and Jerry D. Martin
The Chad and Crista Martin Charitable Fund

Martin Family Memorial Fund

McCallister Response Fund
Robert E. and Sandra L. McCallister

Dorothy Fitzgerald McConnell - Billie and Lawrence L. Lynch Fund
David Lynch

Louise "Peggy" McCormack Fund

Darryl and Isobel McDaniel Fund

Rev. Dorothy McDormand Fund

Frances A. Meador Fund

Meizon Church/First Christian Church, Gainesville, FL Circle of Compassion Fund
Meizon Christian Church, Gainesville, FL

Memorial Boulevard Christian Church, St. Louis, MO Circle of Compassion Endowment Fund

Judith Meneghin Fund
Judith A. Meneghin

Mid Ohio Valley Parish Circle of Compassion Fund

Midwest Boulevard Christian Church, Midwest City, OK Circle of Compassion Fund

Bill and Margie Mitchell Fund

Mildred A. Mooney Estate Fund

Frederick and Virginia Moore Endowment Fund
The Frederick and Virginia Moore Family Trust

Erin and Alex Morse Fund

Ryan Motter Permanent Fund

Jean Muir Endowment Fund

Rev. Bill and Jennie Sue Murdock Endowment Fund

John Murphy Permanent Fund

Week of Compassion Funds Cont.

Vy Nguyen Fund
Vy Nguyen

Nihiser and Palmieri Endowment Fund
Kim and Joann Palmieri

Roger and Mary Norman Endowment Fund
Jerry Burton

Northway Christian Church, Dallas, TX Circle of Compassion Fund

Northwest Christian Church, Seattle, WA Circle of Compassion Fund

Ann Wilson Oakes Permanent Endowment Fund
Lordstown Christian Church, Warren, OH

Bonnie Osei-Frimpong Fund

Marianne S. Overley Fund

Owen Family Fund

Tom Page Memorial Fund

Lester and Janelle Palmer Fund
Lester D. Palmer

Robert and Phyllis Parish Fund

Peachtree Corners Christian Church, Norcross, GA Circle of Compassion Fund

Reverends Sarah and Andrew Taylor Peck Endowment Fund

Parker and Isabel Pengilly Endowment Fund

Pennsylvania Ave. CC, Oklahoma City, OK Fund

Pershing Avenue Christian Church Circle of Compassion Fund

Danny and Patti Plaster Endowment Fund

Plymouth Creek Christian Church Legacy Fund

Alice Porter Fund

John and Janice Porter Fund

Lucy Powers Fund

Elizabeth Youngblood Proffer Endowment Fund

Walter Reed III Fund

Reverend George R. Reese Endowment Fund
James and Heather Schult Family

Rexroat-Way Family Fund
Minta J. Colburn

Courtney Richards and Brad Lyons Fund
Courtney Richards
Vy Nguyen

John M. and D. Jeannine Richardson Fund
John M. and D. Jeannine Richardson

Ridglea Christian Church, Fort Worth, TX Circle of Compassion Fund
Ridglea Christian Church, Fort Worth, TX

Jennifer Riggs Refugee Fund

Rodenberg Family Endowment Fund

Glen E. and Donna J. Rosborough Fund

Lawrence E. and Dorothy C. Rueff Fund

Week of Compassion Funds Cont.

Saint Andrew Christian Church, Olathe, KS Circle of Compassion Fund

Jerry and Gladys Sawyer Fund
Jerry and Gladys Sawyer
Stanley Stewart

Keith William Schulthes Memorial Endowment Fund

Jon Secaur and Linda Idoine Fund

Reverend Don F. Selman Fund

Penny Paxton Shorow Endowment Fund

Viona and Merrill Shuyler Endowment Fund

Smith Family Fund
Kate Smith

Mary Gayle and Wayne P. Smith Endowment Fund
Mary Gayle Smith

Kenneth and Kathleen Speicher Fund

Stanfield and Lyskey Endowment Fund

Ryan Starr Fund

William Paul Stubbs Memorial Fund

Virginia Swindler Fund

Larry and Betty Tankersley Fund

Jerry and Shirley Teague Endowment Fund

John and Eunice Teague Endowment Fund
Sylvia A. Teague

Reverend Tyler Andrew Thompson and Family Fund

Mary V. Bennett Topping Fund

University Christian Church, Fort Worth, TX Circle of Compassion Fund

University Christian Church, San Diego, CA Circle of Compassion Fund

University Christian Church, Seattle, WA Circle of Compassion Fund

University Place Christian Church, Champaign, IL Circle of Compassion Endowment Fund

Valley Heights Christian Church, Thornton, CO Permanent Fund

Van Dyck Family Fund
Betty Van Dyck

Alexis Vaughan Fund
Vy Nguyen

A. Guy Waldrop Fund

Washington Avenue Christian Church, Elyria, OH "to the ends of the earth" Circle of Compassion Fund

Harold R. and Evelyn N. Watkins Fund

Suzanne Webb Endowment Fund

Mary Anne Webster Fund

West Mesa Christian Church. Albuquerque, NM Circle of Compassion Fund

Melissa West Endowment Fund
Robert West

Week of Compassion Funds Cont.

Robert and Melissa West Endowment Fund

Robert West

Westview Christian Church, Wilson, NC Circle of Compassion Fund

Frances and Eric White Permanent Fund

Paul W. Whiteside Fund

Wilhelm Park Christian Church, Baltimore, MD Fund

Robert Allen and Anna A. Wilhoyte Fund

Wilshire Christian Church Foundation Permanent Fund

Wilshire Christian Church Legacy Fund

Rollie Wirt Fund

Audre Bratcher

Tamalyn Kralman

Douglas and Cathy M. Wirt

Craig and Rev. K.K. Wiseman Endowment Fund

Wonder Milly Fund

Melinda and Lanny Wood Fund

Melinda Keenan Wood

Deborrah M. and Johnny W. Wray Endowment Fund

Walter Wells Permanent Fund

Robert K. Welsh Fund for Christian Unity

Robert Welsh

Sue and Newell Williams

Richard and Peggy Ziglar

Bethel Wentz Fund

David C. and Bethel J. Wentz

Cecilia Marie Wentz Memorial Fund

David C. and Bethel J. Wentz

David Wentz Fund

David C. and Bethel J. Wentz

Donald A. Wentz and L. Nelva Wentz Fund

David C. and Bethel J. Wentz

Rachel Ashley Wentz Memorial Fund

David C. and Bethel J. Wentz

Sara Beth Wentz Memorial Fund

David C. and Bethel J. Wentz

Otto E. and Martha Werner Memorial Fund

Helene Hornback Wert Memorial Fund

West Boulevard Christian Church, Cleveland, OH Fund

West Creighton Avenue Christian Church Fund

Adam Clint West Memorial Fund

John M. and Jeannine Richardson

Randy and Mary Jane West Fund

Susan B. Westbrook Memorial Fund

Westhampton Christian Church, Roanoke, VA We Can Change the World Fund

Westhampton Christian Church, Roanoke, VA

Westpark Christian Church, Bremerton, WA Permanent Fund

Westwood Christian Church, Westwood, KS Legacy Fund

Donald M. Wharff Fund

James W. and Lois I. Whitaker Fund

Lois and James W. Whitaker

Cary and Jacque White Fund

Frank J. and Lou Whitworth Fund

Willard J. Wickizer Sr. Memorial Fund

William and Dorothy Widmar Fund

Richard and Mary Alice Wilburn Fund

Michael Wilder Memorial Fund

Charlene Wiles Fund

Catherine Wilkerson Fund

Ivy E. Wilkin Mission Fund

Eva Wilkinson Fund

Delbert E. and Mabel Howell Wilks Fund

Willcox Christian Church in Arizona Fund

Evlyn Joan Williams Fund

John Norton Williams and Grace Lord Williams Fund

Rev. Dr. Col. Norman L. Williams Fund

E. Dale Williamson Global Fund

E. Dale Williamson

Oren F. and Beatrice H. Williamson Fund

Samuel P. and Helen Williamson Scholarship Fund

Robert and Madge Hamble Willian Fund

Donald C. and Marjorie Finch Wilson Scholarship Fund

Irma L. Wilson Fund

Norma L. and Earnest L. Wilson Fund

Robert O. and Dottie Wilson Fund

Sarah E. Wilson Family Fund

Sarah Wilson Endowment Fund

Maxine F. Winger Fund

Winker Permanent Fund

Elizabeth L. and Russell F. Hallberg Foundation

John H. and Alma Wolfe Memorial Fund

Tom Wood Association of Disciple Musicians Worship Clinician Fund

Tom and Peggy Wood Fund for the Association of Disciple Musicians

Woodland Christian Church, Houston, TX Legacy Fund

Woodville Christian Church, Woodville, MS Fund

Woodworth Van Lines Endowment Fund

Margo Woodworth Evangelism Scholarship Fund

A. Jean Woolfolk Memorial Fund

Winston L. and Phyllis E. Worden Fund

Johnny and Deborrah Wray Fund for Southern Christian Services for Children and Youth

Carl R. Knerr

James M. and Donna C. Wray

Johnny and Deborrah Wray

Julie Inman Wrench Memorial Fund

Rose Wright Estate Fund

Robert J. Wyatt Estate Fund

Yakama Christian Mission Permanent Fund

Dan and Anna Beth Yarbrough Fund

Michael C. and Suanne Yarbrough

Michael and Suanne Yarbrough Permanent Fund

Michael C. and Suanne Yarbrough

Paul Yarbrough Fund

Michael C. and Suanne Yarbrough

Bobbie Yellott Fund

Kristen Beach

Great River Region of the Christian Church

Roy E. and Catherine B. Yetter Estate Fund

Hannah H. Younghusband Fund

Jack and Joan Zeigler Fund

Zephyr Heritage Fund

William K. and Kathryn C. Zimmerman Fund

LET US NOT *Love*
WITH WORDS OR
SPEECH, BUT WITH
Actions IN TRUTH

1 John 3:18



LIFE-INCOME GIFTS

Life-income gifts combine charitable giving to a beloved ministry with an ongoing income stream for the life of the donor or someone they cherish.

Charitable Gift Annuities and Charitable Remainder Trusts are the most common life-income gifting plans and follow a similar process. A donor makes an irrevocable gift; payments are made to the donor or their designated recipient for life or a term

of years; and when the scheduled income terms are completed, the remaining gift assets support the ministry designated by the donor.

Donors may receive a charitable income tax deduction at the time they fund their Charitable Gift Annuities or Charitable Remainder Trusts.

As of December 31, 2025, the Foundation was managing one or more life-income gifts funded by these donors.

Barbara A. Allen
Lloyd James Allen
Lawrence L. and Juanita J. Amos
Carolyn M. Anderson
Loren E. and E. June Arnett
David A. and Priscilla Joy Baker
Jack Leonard and Mildred L. Barnes
Robert P. Barnsdale
Rosalind I. Barnsdale
Joseph Barthel
Ruby Jo and Wayne Behymer
W. Gansel and Marie R. Bennett
Omer A. and Jane A. Bentle
LeRoy D. and Frances R. Benton
Maurine K. Blackwell
Robert R. and Marilyn Botkin
Susan O. Bowman
Camille S. Boyd
Martha June Bradshaw
C. Allan and Marie Brady
Donald E. and Dora D. Brammer
Donald D. Brattebo
Peggy L. and Charles L. Brittan
Bernice Brown Scott
Evelyn Park Brown
Janeen R. Bruner
Darrell and Dianne Burrell
Jane H. Byers
Jeannette Rankin Byers
Howard E. and Mildred N. Cain
Gerald A. and Mary Lee Caress
Doris Jane Christen

Delores I. Clark
Robert N. and Ida-Anne H. Clarke
John R. and Mary Margaret Clay
Minta J. Colburn
Shirley D. Compton
LaVerne and Patricia Couch
James W. and Shari A. Cullumber
Laura K. Dargitz
Patricia R. Dart
Beverly Davis
Chris D. and Merita E. Diebel
Paul H. and Joan Drake
Stewart and Sarah Draper
Donna M. Dye
Danny L. and Jacqueline L. Eberts
Pauline N. Engle
Brenda W. Etheridge
Marjorie Ferrill
Paul E. and Ruth W. Few
Marilyn S. Fiddmont
Mrs. Thell Foley
Jeane Galehouse
Janet S. Garrison
Frances W. Gasche
Beth M. Gerardy
James E. and H. Barbara Gordon
Thomas W. Graves, Jr.
Lari Ray Grubbs
Richard L. and Emily A. Guentert
Forrest D. and Eleanor V. Haggard
John T. and Anna F. Hardt
Fred M. Harris

Traverce W. and Mary Lou Harrison
H. Leon Harter
Kenneth L. and Elisabeth H. Hartung
Betty J. Hassell
Bruce F. and Dorothy J. Henry
Thomas L. and Alice C. Henry
Kennith C. and Louise Ruth Hewitt
Nathan L. and Claudia N. Higginbotham
Sabra A. Hodnett
Samuel B. and Mary A. Howard
Tod V. and Eleanor M. Hubbell
William L. and Mary D. Jackson
Sharon Travis Jasnowski
John D. and Linda L. Jewell
Lewis G. Joachim
D.E. Ace and Irma Z. Johnson
Tary Davis Johnson
Louise M. Jones
Fred L. and Katherine B. Jordan
Jeanne M. Karpenko
Carolyn W. Kelso
Ann M. Kercheval
David A. and Donna R. Killen
Morris S. and Janice N. Knox
Leonta M. and William A. Longman
Richard and Beverly Longo
Ann Lorey
Bryan G. and Margaret E. Lott
William D. and Jeanette L. Maier
Melinda K. Mains
Shirley M. Malaby
Darwin A. and Mary Jane Mann
Suzanne Marty
Martha S. Mason
Tom and Sally L. Mason
Jack and Jean Matthews
Raymond L. and Ruth L. McClurg
Maureen McGinty
Marion E. McGlohn
Charles R. and Teresa L. McLendon
Nancy R. and Kenneth W. McMaster
David S. and Christine McNelly, II
Mildred R. Merriman
David C. and Ruth Ann Mindel
James T. Minyard
William B. and Betty I. Moore
Kathleen Moyer
Sandra S. Mull
Oran R. and Charlotte D. Nabors
John and Loretta Nesby
Jerry E. and Shannon M. Norris
Joyce J. Oldenburg
Denise D. Olmsted
Marvin G. and Sally Fleming Osborn
Vaughn P. and Bonita L. Ouellette
David F. and Linda K. Palagyi
Dennis D. and Mabel M. Parrett
Rodney L. and Mary Anne Parrott
Margy C. Patterson
David and Eleanor Perkins
Jerry W. Pittman

Thomas H. and Helen Jane Quigley, Jr.
Richard Arnold and Karen B. Ramos
Clifford George and Mary Beth Rankin
Olive C. Rediess
Thomas H. and Eva Elaine Reeder
Donald D. and Marjorie L. Reisinger
Bobby H. and Martha H. Richardson
Donald L. and Johanna C. Richardson
J.R. and Patricia Ritchey
Donald E. and Lucy C. Ritter
James R. and Kathleen A. Robertson
William R. and Bennita M. Robertson
Barry K. Robinson
Joanne Rossman
Holly C. Rudolf
Thomas O. Russell
Charles H. and Anne M. Sanders
Helen F. Satterthwaite
Juanita S. Scriven
Rolland and Laura Sheafor
Jane W. Sikes
William G. Sikes, Jr.
Jesse J. and Mary Virginia Simoson
Douglas W. Smith
Sally A. Smith
Raymond A. and Betty J. Speas
Virginia G. Spradlin
Larry D. and Ann C. Stafford
Joe A. and Nancy Vaughn Stalcup
Milo L. Steffen II
Lawrence S. and Frances L. Steinmetz
Jay A. and Mona L.D. Stevenson
Ray and Marilyn Cragin Stewart
Nancy A. Symes
Hal E. and Sharon P. Tatum
Victor and Casey Taylor
Floyd and Ruth Thiel
Carmen N. Thompson
Kenneth L. and Irene C. Thompson
Jerry D. and Janet M. Thomson
Robert H. and Joyce H. Tober
James H. and Patricia H. Trader
Karen Bartmess Tye
Mary Jane Tyler
J. Ray and JoAnn H. Warren
Evelyn N. and Harold R. Watkins
Don C. and Anna J. Weiser
Norman and Kathy Wells
Kieth P. and Susan K. Wheeler
Bill and Betty Whitaker
F. William and Mary S. Wiegmann
Evelyn Wiker
Joseph M. and Emily Rees Wilcox
Mary E. Worley
Richard V. and Peggy N. Ziglar



STEWARD'S DONOR-ADVISED FUNDS

The Foundation's Steward's Donor-Advised Fund allows donors to make a charitable gift while retaining the ability to advise on their fund's distributions, including the timing and amount to be distributed to their selected charitable organization. Individuals may choose a Steward's Donor-Advised

Fund as one of their tax-planning strategies while supporting ministries they hold dear. During 2025, these funds distributed more than \$1.4 million to support the ministries and charitable organizations selected by their donors.

- Gwendolyn C. and William B. Allen Fund
- The Bill and Nita Archer Memorial Fund
- Ryan and Kristyn Arnold Family Fund
- David and Vickie Batzka Fund
- Homer and Marcia Boutz Fund
- Larry and Diana Brown Family Foundation Fund
- Jackie Compton Bunch Family Fund
- The Carter Fund
- Amy and Guido Climer Fund
- Brenda and Chad Cline Fund
- Richard D. Fearnow Fund
- Norman S. and Marilyn Scruggs Fiddmont Fund
- Kara and Mark Foster Family Fund
- Donald Gentle and Amelia Essman Fund
- Margarite J. Glenn Fund
- John and Kirby Gould Fund
- David and Jennie Gregory Family Fund
- Karen Griswold Fund
- Richard L. and Melinda A. Hamm Fund
- Fred and Deborah Harris Fund
- Marge Hartman Fund
- Robert and Diane Hawley Fund
- Nathan and Claudia Higginbotham Fund
- Richard and Linda Hull Fund
- Anita D. Imhoff Fund
- William and Connie English Fund
- William H. and Mary E. Jacobs Fund
- Sue and Lynn Jenkins Fund
- The Jenkins, Byler and Roller Family Fund
- Don and Tary Johnson Choir Fund
- Randy and Sandy Johnson Fund
- Keys Family Fund
- Gary W. and Judy H. Kidwell Fund

- Lanny and Joy Lawler Family Fund
- Gregory S. and Shannon K. Leichter Fund
- Charlotte M. Liggett Fund
- The John and Jeannine May Family Fund
- McCracken Charitable Fund
- Cheryl and Neil McNeill Fund
- Carla and Ted Meadows Family Fund
- Thomas and Nancy Morgan Trust Fund
- James S. Oglesby Fund
- Michael Lee and Valerie Hutchinson Pennanen Fund
- Thomas H. and Helen Jane Quigley Fund
- Todd and Michele Reed Fund
- Donald and Marjorie Reisinger Fund
- Rick and Denise Reisinger Fund
- Bill and Benny Robertson Fund
- David and Gloria Senior Family Fund
- William and Melissa Singer Fund
- Jone E. and Robin K. Snider Fund
- R. K. Snyder Fund
- Norman A. and Virginia G. Spradlin Fund
- Joe A. and Nancy Vaughn Stalcup Fund
- Mike and Ann Stocker First Christian Church, Albia, IA Quarterly Contribution Fund
- Victor and Casey Taylor Fund
- Susan Elaine Thies Fund
- Bill and Cheri Thompson Family Fund
- The Updegrove Family Fund
- Vaughn-Stalcup Fund
- Wallace Fund
- Daniel R. and Nel Gammon Webster Fund
- Dawn Wilson and Ed Kilgore Charitable Fund
- Geunhee and Geunsoon Yu Fund

ANNUAL GIFTS

The Foundation assists donors with planned giving by providing information and assistance about how a donor might support the ministries they hold dear. From the minutes of a Foundation Board meeting in 1980, it was recorded that, "we are here to advise people and help them in their charitable giving" without advocating or promoting specific ministries or programs. This policy, termed "honest broker," remains central to the work of the Foundation, which does not seek

gifts to support its own operations. Nonetheless, the Foundation is honored by those who have chosen to support the Foundation's mission through an annual gift. These gifts, coupled with income from endowments established to support the Foundation's mission, expand our ability to serve Disciples. We are grateful to those listed below who supported our ministry with an annual gift in 2025.

- Bethany Christian Church, Cleveland, OH
- Bethany Christian Church, Lincoln, NE
- Christian Church in Kentucky, West Area
- Christian Church in the Southwest
- Christian Church of Mid-America
- Jared and Anna Cline
- Antonio Febus and Julia Diaz
- Marilyn S. Fiddmont
- First Christian Church, Burbank, CA
- First Christian Church, Concord, CA
- First Christian Church, Hopkinsville, KY
- First Christian Church, Nebraska City, NE
- First Christian Church, Olathe, KS
- First Christian Church, Ottawa, KS
- First Christian Church, San Angelo, TX
- First Christian Church, San Marcos, TX
- Kara and Mark Foster
- Bruce and Donna Frogge
- Monica Myers Greenberg
- Sue and Pat Hansen
- Joe and Emily Hartman
- Robert W. and Diane A. Hawley
- Ryan Hazen and Ruth Weaver Hazen

- Independence Boulevard Christian Church, Kansas City, MO
- Debbie and Bill Jennison
- James P. Johnson
- Karen L. Johnson
- Lori and John Lucas
- Melinda K. Mains
- Kirby Hughes Marks
- Park Place Christian Church, Hutchinson, KS
- Perry Christian Church, Perry, MO
- Bennita M. Robertson
- Rock Bridge Christian Church, Columbia, MO
- JJ and Ria Santos
- Donald R. Sarton
- Heather M. and Michael Simpson
- Virginia G. Spradlin
- Nancy Vaughn Stalcup
- James and Caroline Sullivan
- Tapestry Church, Bargersville, IN
- Trinity United Christian Church, Cheney, KS
- Union Avenue Christian Church, Litchfield, IL

FIERS-BROWN SOCIETY



A. DALE AND BETTY FIERS

DEWITT AND OTHEL BROWN

In 2025, the Foundation marked the 30th anniversary of the Fiers-Brown Society, recognizing those who have generously created a planned gift to support Disciples ministries.

Brother and sister, A. Dale and Othel Fiers, gave abundantly to the church of their talents and treasure.

The Rev. Dr. A. Dale Fiers served in numerous leadership roles for the Disciples of Christ, including as chief architect of the Design and our first General Minister and President. Rev. Fiers' wife Betty served as president of the International Christian Women's Fellowship for four years; and in 1960, the governor of Indiana appointed her to the state's civil rights commission, where she served for eight years. The Fierses

were congregational, denominational, and community leaders.

Rev. Fiers championed the creation of the Christian Church Foundation. "No one was more responsible in the creation and support of the Christian Church Foundation," said Foundation president emeritus Rev. Dr. James P. Johnson. The Fierses took great pride in the growth of the Foundation as they watched it move from an idea and concept to a successful, growing, and maturing unit of the church.

Rev. Fiers' sister Othel and her husband DeWitt Brown met when Dale invited DeWitt (his then boss) to the Fierses' home for dinner. In Charlotte, North Carolina, DeWitt and Othel were the owners of the Dixie News, one of the



CREATE YOUR *lasting legacy* THROUGH ONE OF THE FOLLOWING

ESTABLISH A NAMED PERMANENT FUND WITH THE FOUNDATION

COMPLETE A LIFE-INCOME GIFT WITH THE FOUNDATION

COMPLETE BENEFICIARY DESIGNATIONS, WILLS, TRUSTS OR OTHER AGREEMENTS THAT WILL CREATE A FUTURE PERMANENT FUND WITH THE FOUNDATION.

largest magazine and newspaper distributors in the South. This quiet, faithful couple were known throughout their community for being remarkably dedicated to their shared work at the company. They were also known for their quiet generosity, which included annually gifting tens of thousands of dollars to a variety of charities.

The Fierses and Browns each created planned gifts that would support the Christian Church (Disciples of Christ) in perpetuity. When Othel died in 1987, her estate made the then-largest gift to a protestant denomination of \$8 million.

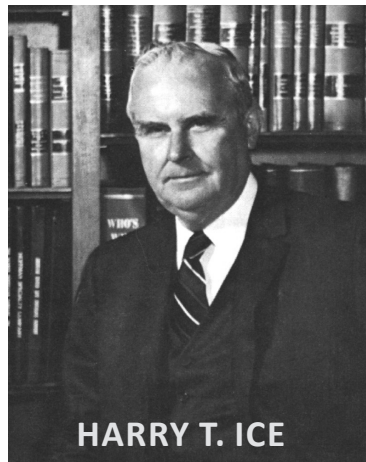
To honor the faithful examples of the Fierses and Browns, in 1995 the Christian Church Foundation created the Fiers-Brown Society to recognize those who have made planned gifts to benefit the Christian Church (Disciples of Christ).

CELEBRATING **30** YEARS

The **FIERS-BROWN SOCIETY**

EST. 1995

In 2025, we celebrated the 30th anniversary of the Fiers-Brown Society, so aptly named for these saints of the church. Today more than 1,700 individuals belong to the Foundation's Fiers-Brown Society, each of them has created a planned gift or established a permanent fund through the Christian Church Foundation to benefit ministries of the Christian Church (Disciples of Christ).



HARRY T. ICE DISTINGUISHED SERVICE AWARD

The Harry T. Ice Distinguished Service Award was created by the Foundation in 1984 to recognize excellence in philanthropy within the Christian Church (Disciples of Christ).

The award honors Harry T. Ice, founder of the Indianapolis-based law firm, Ice, Miller, Donadio & Rayan, now Ice Miller LLP. Mr. Ice served on the original Blue-Ribbon committee that led to the creation of the Foundation as a general unit of the Christian Church (Disciples of Christ) in 1969. He served on the Foundation's first Board of Directors and was the Foundation's first general counsel. He also held leadership positions within the Pension Fund, Christian Theological Seminary, and other church entities. Mr. Ice died in 1982.

Award recipients demonstrate personal generosity, leadership in philanthropy, and a love of and commitment to the Christian Church (Disciples of Christ).



During the 2025 General Assembly in Memphis, TN, Paul and Ruth Few of Lincoln, Nebraska, were honored with the Harry T. Ice Distinguished Service Award for their faithful generosity to local, regional, and general expressions of the Christian Church (Disciples of Christ).

For 57 years, Paul served Disciples Men's ministries, including a term as President of the International Christian Men's Fellowship in 1991. In 2023, when he retired, Paul was serving as the Men's Ministries Coordinator in the Nebraska Region, where he hosted retreats, led small groups, and helped men find a deeper faith in their walk with God.

Ruth has been devoted to the Nebraska Region's Kamp Kaleo. For nine



years, she coordinated the annual "Junk Jaunt," a yard sale running for many miles with food vendors and musical groups. This fundraiser has produced tens of thousands of dollars to support Nebraska's camping ministry.

For decades, Paul and Ruth provided steady, humble leadership, and generous support to the Christian Church (Disciples of Christ). Rooted in faith and commitment to the church, Paul and Ruth served on the boards for Disciples Home Missions, Phillips Theological Seminary, Kansas Christian Home, Kamp Kaleo, Child Saving Institute, the Nebraska Region, and their local congregation, Edenton Christian Church.

Together, Paul and Ruth spearheaded the work of establishing the Men's Ministries Endowment Fund, supporting the work of

Disciples Men throughout the denomination. Today, this endowment has more than 25 named funds, totaling nearly \$450,000 (See page 35). Additionally, Paul and Ruth have established several life-income gifts with the Christian Church Foundation which will continue their financial support to the ministries they love, long after their days of service are over.



PAUL & RUTH FEW
2025 AWARD RECIPIENTS

Past recipients:

- | | |
|-----------------------------------|--------------------------------------|
| 1984 James R. Reed | 2013 Virginia and Frank Winker |
| 1987 Joe and Nancy Vaughn Stalcup | 2014 Oscar Haynes |
| 1989 Hannah Youngusband | 2017 Dick and Dolores Lofton |
| 1991 Marvin G. Osborn | 2019 Edith Kelly-Green |
| 1996 Sam and Mary Howard | 2019 Nathan and Claudia Higginbotham |
| 2002 Evelyn and Hal Watkins | 2020 Delores "Dee" Clark |
| 2004 Allan and Marie Brady | 2023 Peter and Lynne Morgan |
| 2009 Bill and Benny Robertson | 2025 Paul and Ruth Few |
| 2012 Huberto and Arlene Pimentel | |



James P. Johnson
President Emeritus
Christian Church Foundation

The Rev. Dr. James P. Johnson died on January 11, 2026. At that time, the Foundation was finalizing this annual report, and we will share more about Jim's leadership and ministry in our 2026 annual report.

JAMES P. JOHNSON STEWARDSHIP AWARD

The James P. Johnson Stewardship Award, created in 2003, honors Foundation President Emeritus Rev. James P. Johnson and recognizes a congregation of the Christian Church (Disciples of Christ) that has demonstrated leadership, creativity, and integrity in answering God's call to faithful stewardship, including the faith discipline involved in the stewardship of accumulated resources.

Nominations for the James P. Johnson Stewardship Award are provided by Foundation staff and members of the Board of Directors and approved by the Board of Directors.

Past recipients:

- 2003 James P. Johnson
- 2005 Central Christian Church, Decatur, IL
- 2007 University Christian Church, Fort Worth, TX
- 2009 First Christian Church, Bowling Green, KY
- 2011 First Christian Church, North Hollywood, CA
- 2013 Sandy Springs Christian Church, Sandy Springs, GA

- 2015 Washington Avenue Christian Church, Elyria, OH
- 2017 Cherry Log Christian Church, Cherry Log, GA
- 2019 First Christian Church, Minneapolis, MN
- 2020 First Christian Church, Midland, TX
- 2023 Florence Christian Church, Florence, KY

WHOEVER *sows* SPARINGLY WILL ALSO *reap* SPARINGLY...

... AND WHOEVER *sows* GENEROUSLY WILL ALSO *reap* GENEROUSLY.



FOUNDATION STAFF



Rev. Matt Rosine
President



Lori Lucas, CPA, CGMA
Senior Vice President



Joe Hartman, MBA
Vice President,
Investment Program



Melinda K. Mains, JD, MSW
Vice President,
Compliance and General Counsel



Mandy Simpson
Staff Accountant,
Investment Services



Christy Stratton
Manager,
Gift Administration



Evan Waltz
Accounting Assistant,
Gift Administration
Through June 6, 2025



Leslie Watkins
Administrative Assistant,
Treasury Services



Brittney Allen
Supervisor,
Investment Services



Bill Bauer
Director of Human Resources



Cathy Beasley Thomas
Administrative Assistant



Hannah Brauns, CPA
Assistant Controller



Bobbi Wesner
Supervisor,
Gifts Administration &
Accounts Payable



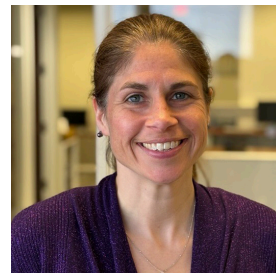
Cathie White, CPA
Assistant Vice President,
Investment Services



Linda White
Administrative Assistant
to the President



Patsy Byrd
Accounting Assistant,
Gift Administration



Laura Ginn
Staff Accountant,
Investment Services



Rachel Harting
Administrative Assistant,
Treasury Services



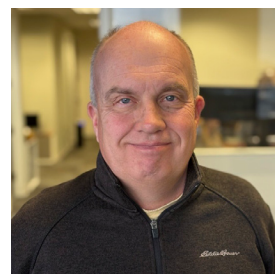
Karen Johnson
Senior Executive Assistant,
Treasury Services



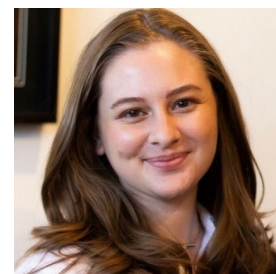
Isabel Joyner
Administrative Assistant



Angie Minatel
Manager of
Investment Services



Larry Perkins
Staff Accountant,
Investment Services



Ashley Ross
Communications Manager

DEVELOPMENT OFFICERS



Rev. Nadine Burton
Vice President
Great Lakes Zone



Rev. Nathan Brown
Vice President
Southeast Zone



Rev. Marilyn Fiddmont
Vice President
Southwest Zone &
Northeastern Region



Kirby Hughes Gould
Vice President
North Central Zone



Rev. Monica Greenberg
Vice President
Mountain West Zone
& Canada Region



Rev. Bobby Hawley
Vice President
South Central Zone



Rev. Randy Johnson
Consultant



Rev. Enrique Ocasio
Consultant
Puerto Rico



ACKNOWLEDGEMENTS AND NOTICES

The Christian Church Foundation, Inc. wishes to acknowledge and thank Kay Slonaker, Nellie Durham, Terry Dunnavant, and Sharon McDonald for their written or photographic contributions to this annual report.

The Christian Church Foundation, Inc., is an integral part of the Christian Church (Disciples of Christ). It is included in the group listing of the General Assembly of the Christian Church (Disciples of Christ), Inc., which carries Tax Exemption Number 1125. The General Assembly of the Christian Church (Disciples of Christ), Inc., is listed in the IRS's Publication 78 data - a list of organizations qualified to receive tax deductible contributions as described in Section 170(c) of the Internal Revenue Code. Publication 78 data is available on the IRS website by using their Exempt Organizations Select Check at apps.irs.gov/app/eos.

Unless otherwise specified, all figures provided in this annual report are as of 12-31-2025, and net of any costs, where applicable.

The complete set of 2025 financial statements, audited by Forvis Mazars, LLP, is available by calling the Foundation at (800) 668-8016 or by visiting our website, www.christianchurchfoundation.org.

The Christian Church Foundation does not offer legal, financial, or tax advice. Information contained in this report should not be used in any way as a substitute for engaging your own legal and financial advisors.

Past performance for investments or gift distributions are not indicative of future results.



LEARN MORE ABOUT THE FOUNDATION'S MINISTRY OR TO FIND THE DEVELOPMENT OFFICER FOR YOUR ZONE, PLEASE SCAN THE QR CODE.

Visit the Foundation's Website



Contact your Zone Representative

